


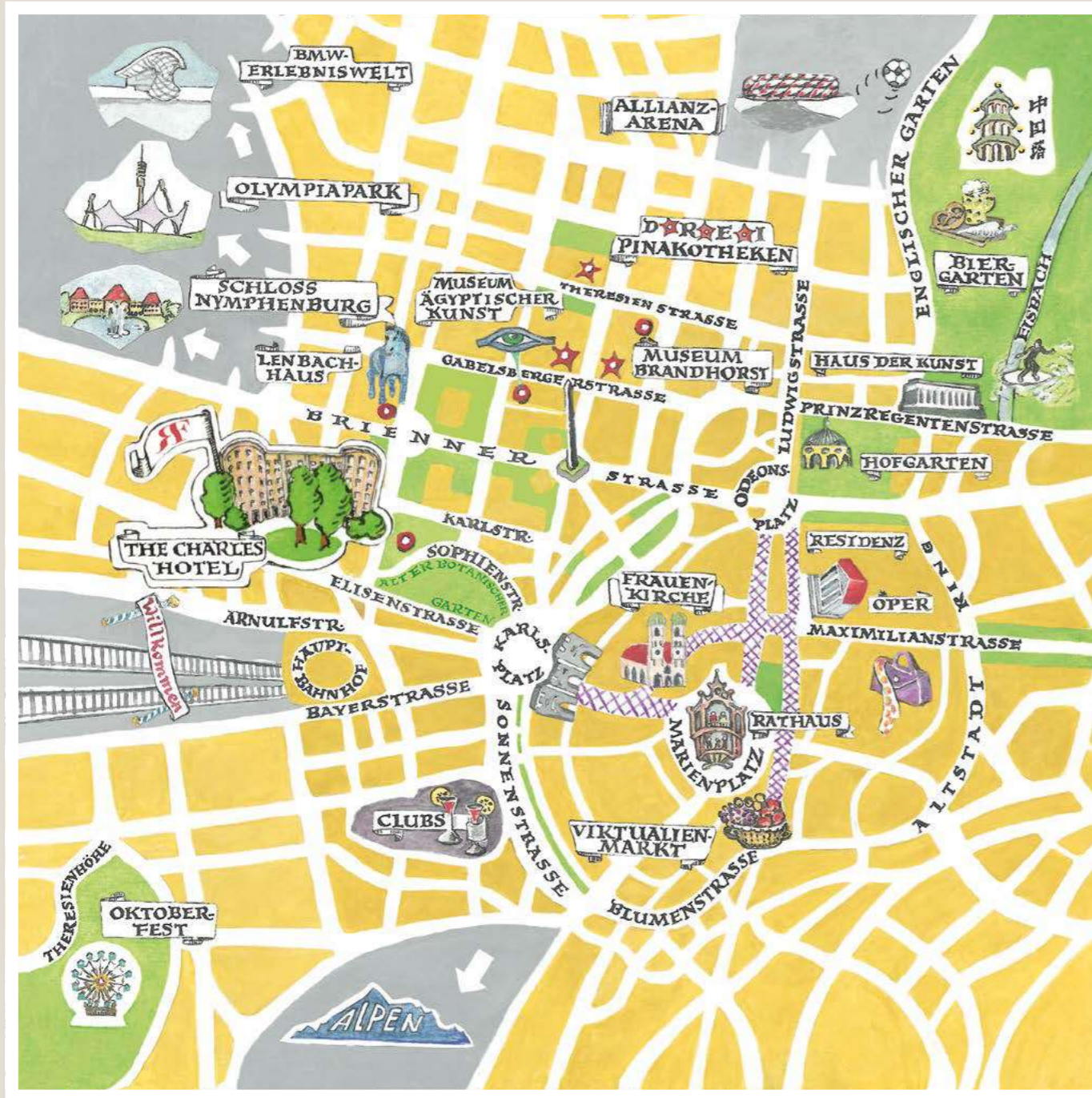


THE CHARLES HOTEL
MUNICH

A ROCCO FORTE HOTEL

Sophienstrasse 28, 80333 Munich, Germany t: +49 89 544 5550 



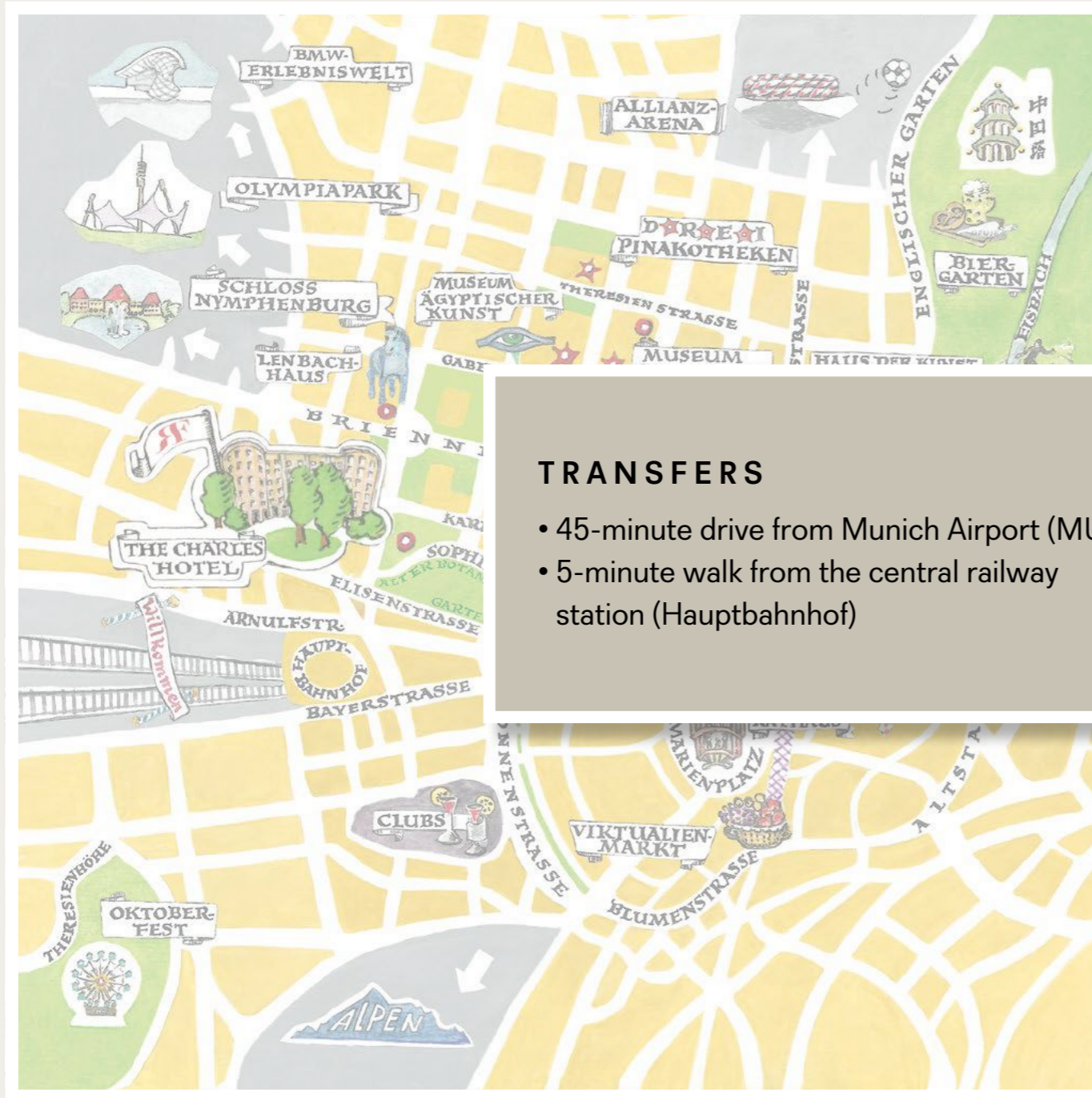


Tucked beside Munich's Old Botanical Garden, The Charles Hotel offers a calm, contemporary retreat with warm Bavarian hospitality. Spacious, light-filled suites overlook leafy gardens and historic rooftops, while the museum quarter and Königsplatz are within easy reach. After days spent exploring, restore your rhythm at The Charles Spa or share plates and stories over classic Italian dishes at Florio, where La Dolce Vita unfolds in a leafy dining room and on the terrace.

TRANSFERS

DINING AND SPA

THE CHARLES HOTEL, MUNICH



TRANSFERS

- 45-minute drive from Munich Airport (MUC)
- 5-minute walk from the central railway station (Hauptbahnhof)

Tucked beside Munich's Old Botanical Garden, The Charles Hotel offers a calm, temporary retreat with warm Bavarian hospitality. Spacious, light-filled suites overlook the Englischer Garten and historic rooftops, while the Theresienstrasse quarter and Königsplatz are within walking distance. After days spent exploring, restore your energy at the spa or share plates of classic Italian dishes at Florio, where the Dolce Vita unfolds in a leafy dining room and on the terrace.

TRANSFERS

DINING AND SPA

THE CHARLES HOTEL, MUNICH



FORTE SUITES



MONFORTE ROYAL SUITE



LORD FORTE SUITE



FORTE SUITE

SUITES



SIGNATURE PARK VIEW SUITE



SIGNATURE PANORAMIC VIEW SUITE



CLASSIC SUITE





EVERY SUITE TELLS A STORY. YOURS.

Individual by design. Extraordinary by experience. Go beyond the suite into hospitality that feels like a homecoming and let your curiosity lead you into the heartbeat of local life.

Inside, everything unfolds naturally, as you find yourself between lazy mornings and stolen afternoons. Every fine detail holds personal meaning, from your favourite scent to a bed made up beneath a blanket of stars. Whether you're here for a romantic escape or returning with family year after year, your suite is part of your story. One that is impossible to replicate.





SUITES & BEYOND

Character in every corner and discoveries in every stay through personal touches,
all thoughtfully arranged, when you book direct:

FORTE SUITES

- In-suite check-in with welcome amenities
- Complimentary in-room bar inclusive of alcoholic beverages
- Wardrobe concierge service, including packing and unpacking, pressing of two garments, shoe shining and sewing services
- Personalised amenity programme
- Access to bespoke services team pre/during stay
- Personalised experiences and cultural encounters
- Return transfer to/from the airport
- Breakfast in your suite or in our restaurant
- Family programme benefits

SUITES

- In-suite check-in with welcome amenities
- Complimentary in-room bar inclusive of alcoholic beverages
- Wardrobe concierge service, including packing and unpacking, pressing of two garments, shoe shining and sewing services
- Personalised amenity programme
- Access to bespoke services team pre/during stay
- One local cultural immersion
- One-way transfer from the airport
- Breakfast in your suite or in our restaurant
- Family programme benefits





MONFORTE ROYAL SUITE
FORTE SUITES
THE CHARLES HOTEL, MUNICH



DISCOVER MORE

THE CHARLES
HOTEL

LOCATION

SUITES

ROCCO FORTE HOTELS





MONFORTE ROYAL SUITE
FORTE SUITES
THE CHARLES HOTEL, MUNICH



DISCOVER MORE

THE CHARLES
HOTEL

LOCATION

SUITES

ROCCO FORTE HOTELS





MONFORTE ROYAL SUITE
FORTE SUITES
THE CHARLES HOTEL, MUNICH



DISCOVER MORE

THE CHARLES
HOTEL

LOCATION

SUITES

ROCCO FORTE HOTELS





MONFORTE ROYAL SUITE
FORTE SUITES
THE CHARLES HOTEL, MUNICH



DISCOVER MORE

THE CHARLES
HOTEL

LOCATION

SUITES

ROCCO FORTE HOTELS





MONFORTE ROYAL SUITE
FORTE SUITES
THE CHARLES HOTEL, MUNICH



DISCOVER MORE

THE CHARLES
HOTEL

LOCATION

SUITES

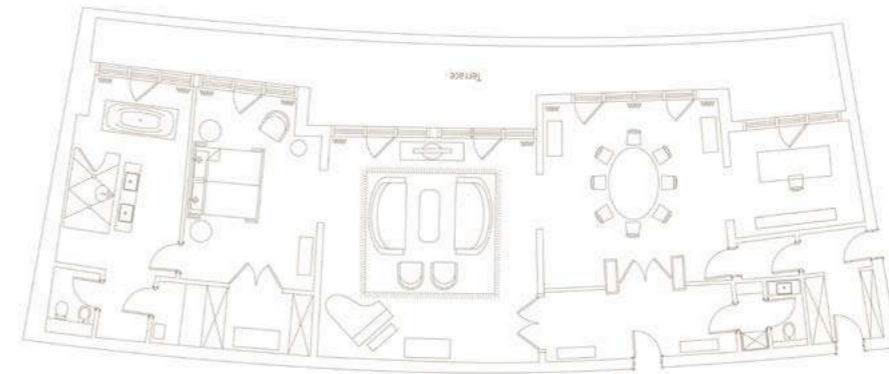
ROCCO FORTE HOTELS





MONFORTE ROYAL SUITE

- 200m²
- Private terrace and bulletproof windows
- Named after the birthplace of Lord Forte
- Bedroom with king-sized bed and walk-in wardrobe
- Marble bathroom with natural daylight, steam room, double shower, separate bath tub and double wash basins
- Can be interconnected to create a two-bedroom or three-bedroom suite



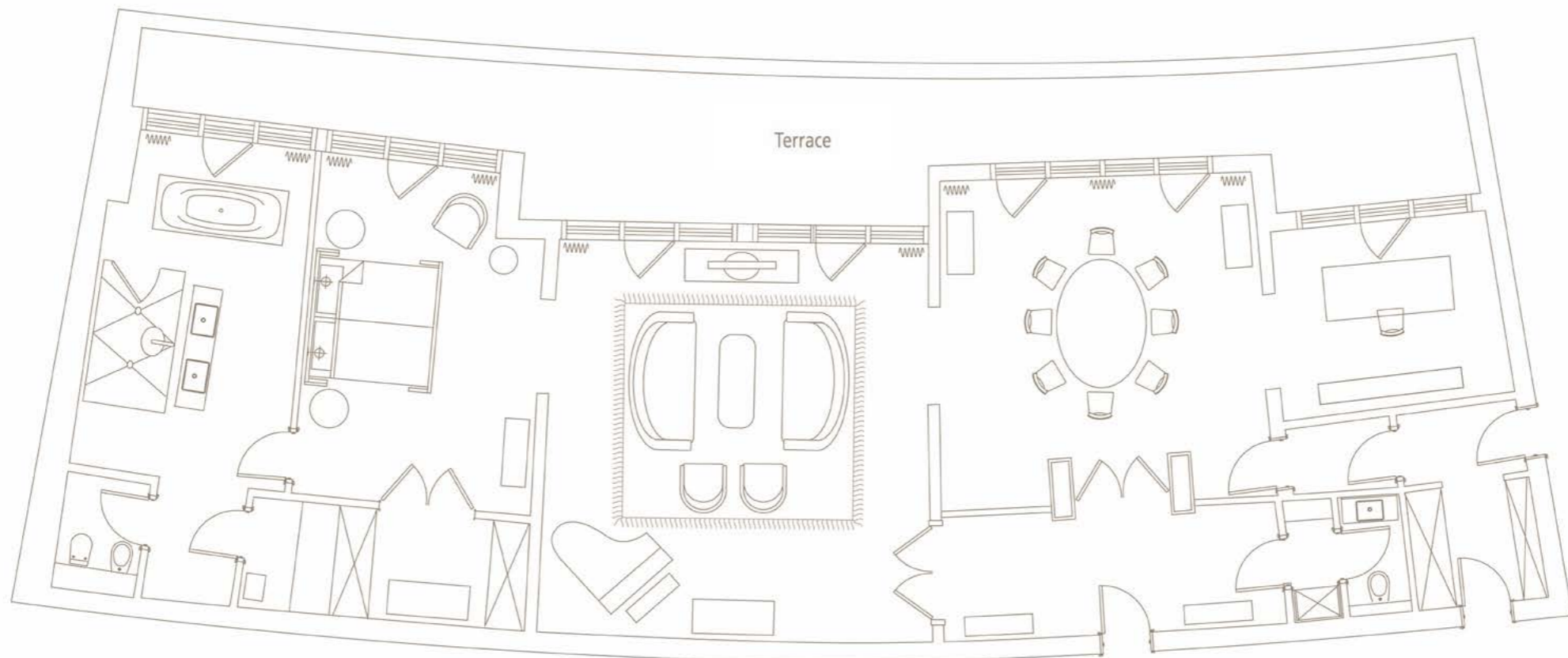
THE CHARLES HOTEL, MUNICH

GALLERY

BOOK NOW



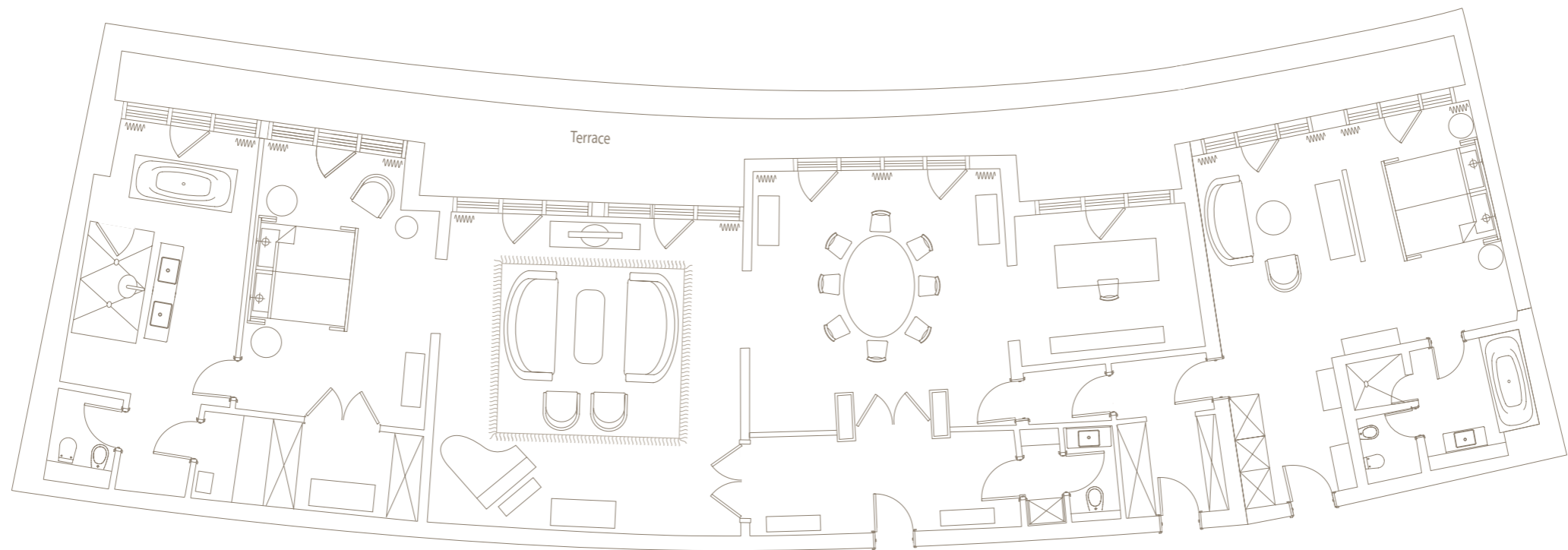
MONFORTE ROYAL SUITE



[View two-bedroom suite](#)
[View three-bedroom suite](#)
[View 8th floor suites](#)



TWO-BEDROOM MONFORTE ROYAL SUITE



[View three-bedroom suite](#)

[View 8th floor suites](#)





THREE-BEDROOM MONFORTE ROYAL SUITE



[View 8th floor suites](#)

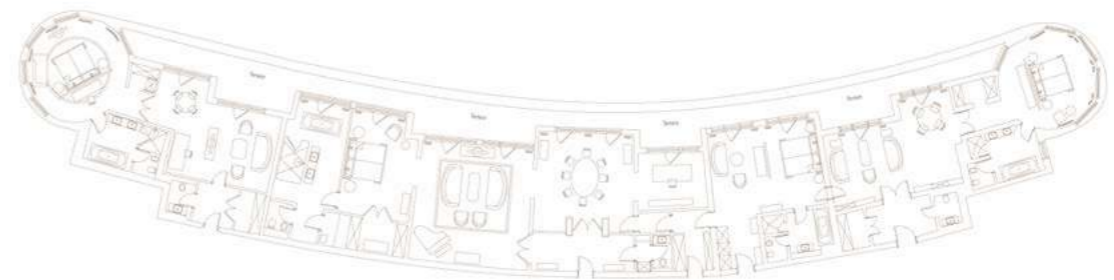




8TH FLOOR SUITES

The entire 8th floor can be booked to form a four-bedroom suite:

- 450m²
- Private terrace
- Four bedrooms
- Four bathrooms
- Overlooking the Old Botanical Garden



THE CHARLES HOTEL, MUNICH

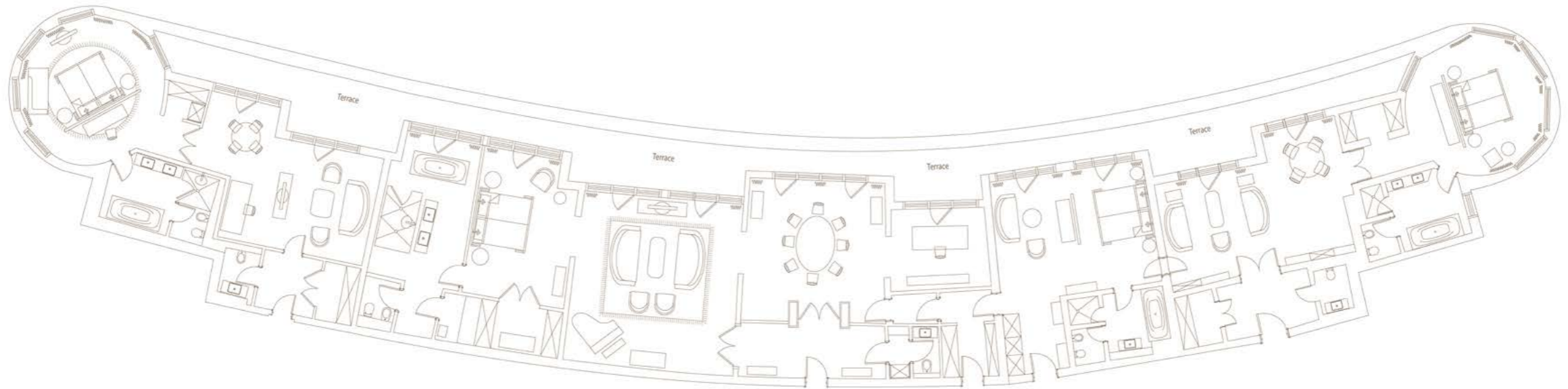


GALLERY

BOOK NOW



8TH FLOOR SUITES





LORD FORTE SUITE
FORTE SUITES
THE CHARLES HOTEL, MUNICH



DISCOVER MORE

THE CHARLES
HOTEL

LOCATION

SUITES

ROCCO FORTE HOTELS





LORD FORTE SUITE
FORTE SUITES
THE CHARLES HOTEL, MUNICH



DISCOVER MORE

THE CHARLES
HOTEL

LOCATION

SUITES

ROCCO FORTE HOTELS





LORD FORTE SUITE
FORTE SUITES
THE CHARLES HOTEL, MUNICH



DISCOVER MORE

THE CHARLES
HOTEL

LOCATION

SUITES

ROCCO FORTE HOTELS





LORD FORTE SUITE

- 92m²
- Private terrace with bulletproof windows
- Bedroom corner suite with walk-in wardrobe and 2 bathrooms
- Overlooking the Old Botanical Garden, Munich's skyline and the Alps



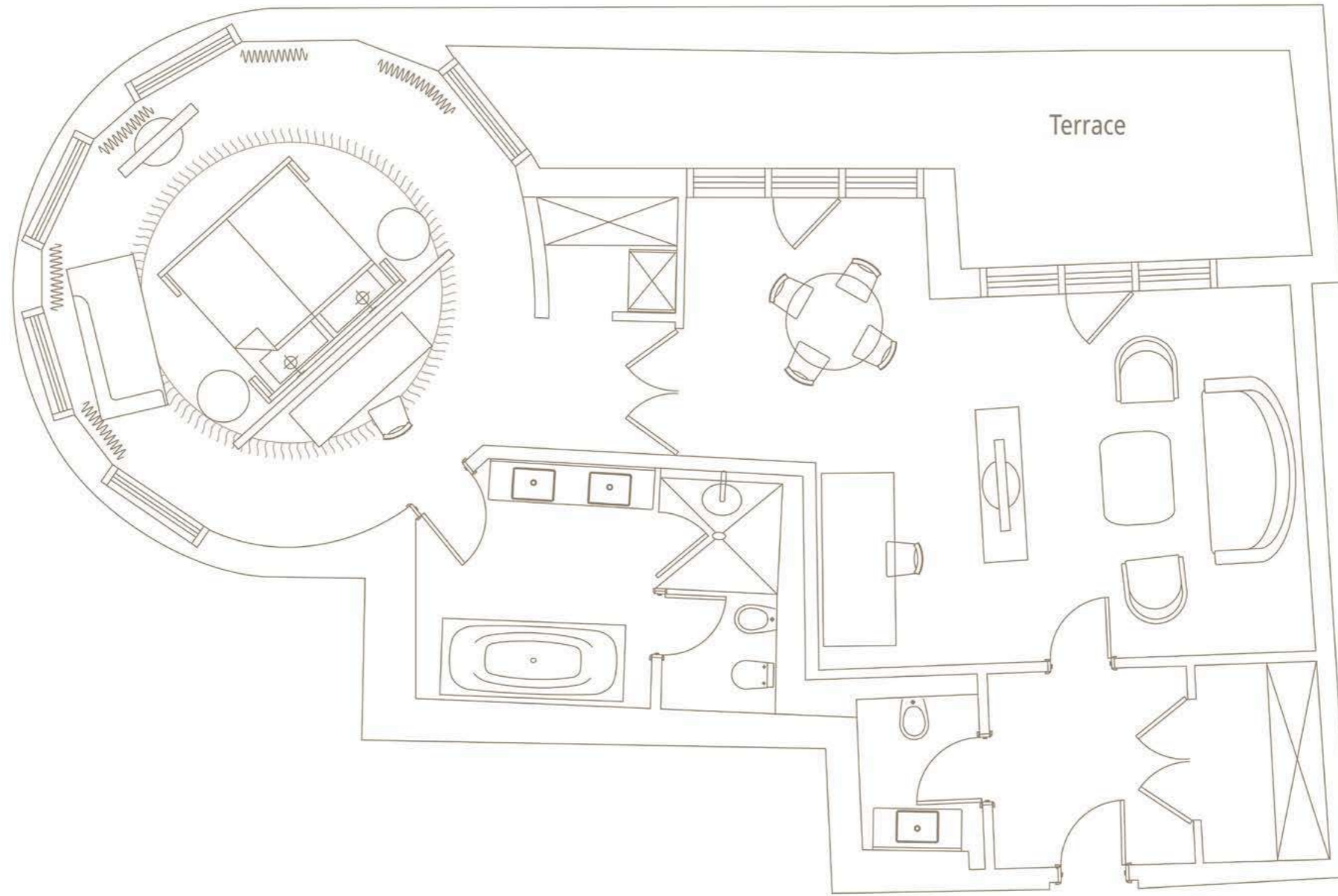
THE CHARLES HOTEL, MUNICH

GALLERY

BOOK NOW



LORD FORTE SUITE





FORTE SUITE
FORTE SUITES
THE CHARLES HOTEL, MUNICH



DISCOVER MORE

THE CHARLES
HOTEL

LOCATION

SUITES

ROCCO FORTE HOTELS





FORTE SUITE
FORTE SUITES
THE CHARLES HOTEL, MUNICH



DISCOVER MORE

THE CHARLES
HOTEL

LOCATION

SUITES

ROCCO FORTE HOTELS





FORTE SUITE
FORTE SUITES
THE CHARLES HOTEL, MUNICH



DISCOVER MORE

THE CHARLES
HOTEL

LOCATION

SUITES

ROCCO FORTE HOTELS





FORTE SUITE
FORTE SUITES
THE CHARLES HOTEL, MUNICH



DISCOVER MORE

THE CHARLES
HOTEL

LOCATION

SUITES

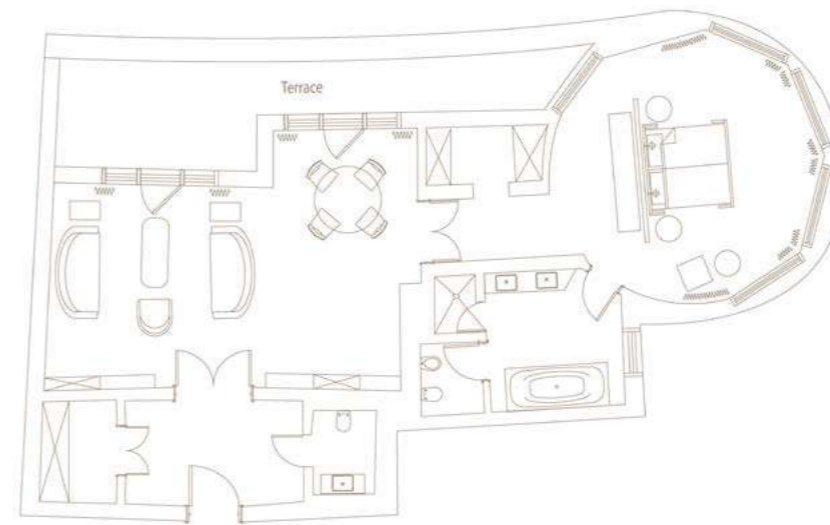
ROCCO FORTE HOTELS





FORTE SUITE

- 92m²
- Private terrace with bulletproof windows
- Bedroom corner suite with walk-in wardrobe and 2 bathrooms
- Overlooking the Old Botanical Garden, Munich's skyline and the Alps
- Can be interconnected to create a two-bedroom suite



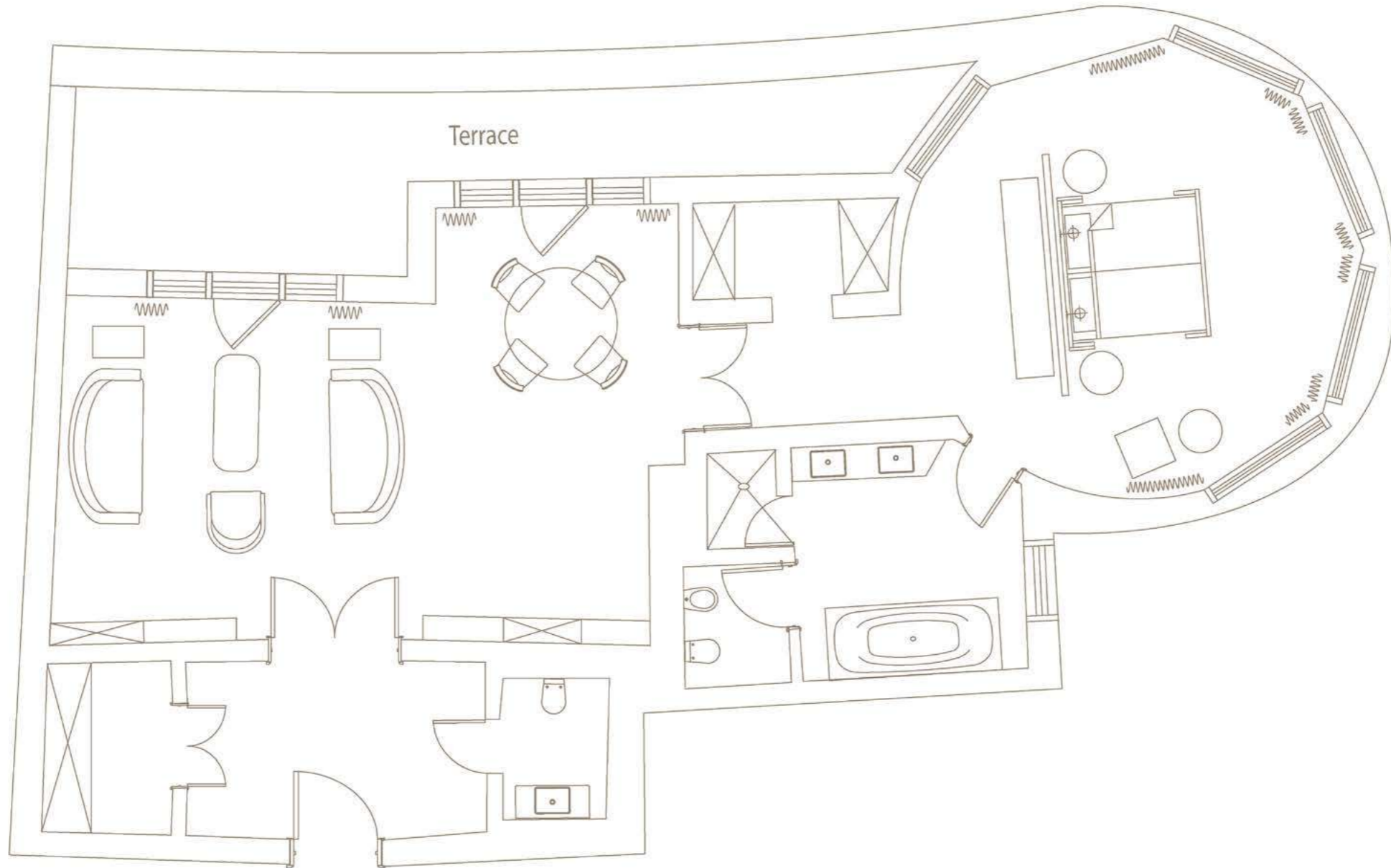
THE CHARLES HOTEL, MUNICH

GALLERY

BOOK NOW

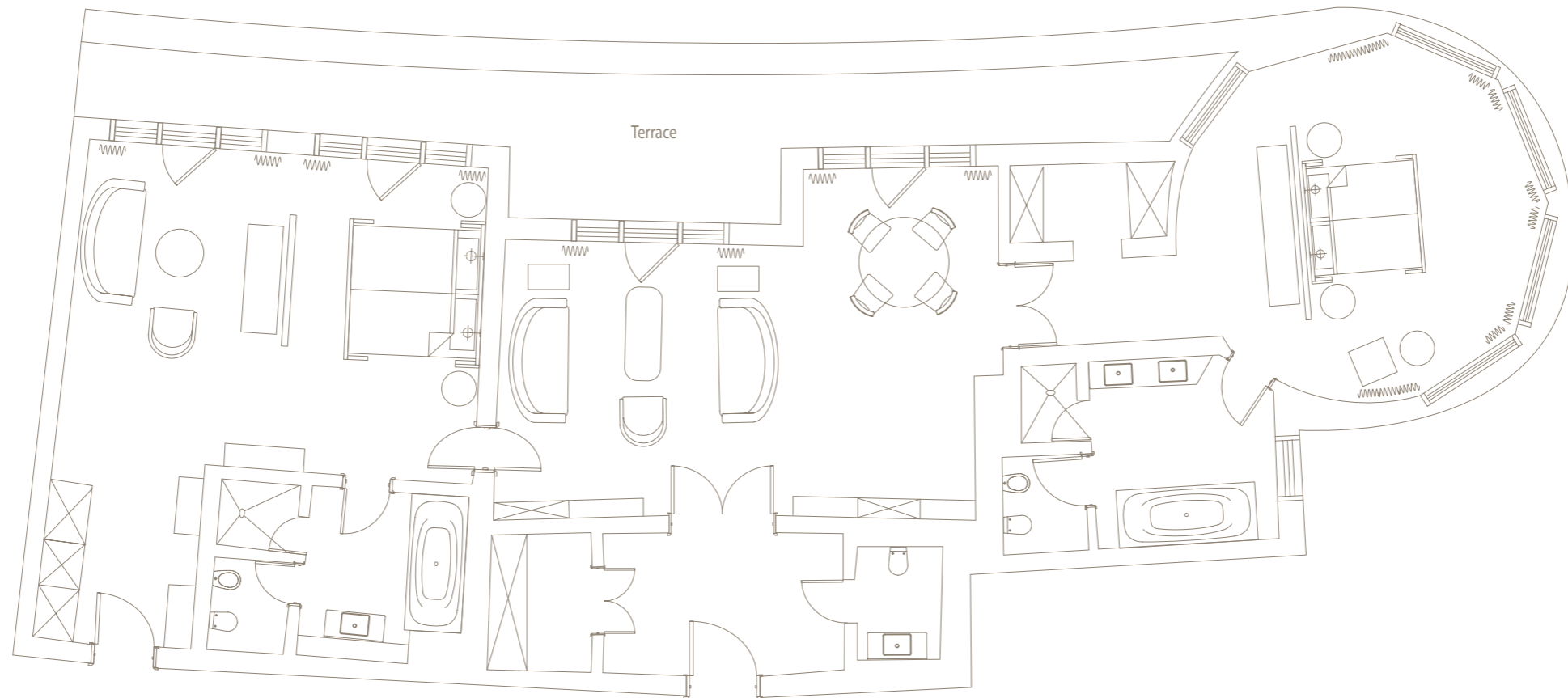


FORTE SUITE



[View two-bedroom suite](#)

FORTE TWO-BEDROOM SUITE





CLASSIC SUITE
SUITES
THE CHARLES HOTEL, MUNICH



DISCOVER MORE

THE CHARLES
HOTEL

LOCATION

SUITES

ROCCO FORTE HOTELS





CLASSIC SUITE
SUITES
THE CHARLES HOTEL, MUNICH



DISCOVER MORE

THE CHARLES
HOTEL

LOCATION

SUITES

ROCCO FORTE HOTELS





CLASSIC SUITE
SUITES
THE CHARLES HOTEL, MUNICH



DISCOVER MORE

THE CHARLES
HOTEL

LOCATION

SUITES

ROCCO FORTE HOTELS





CLASSIC SUITE
SUITES
THE CHARLES HOTEL, MUNICH



DISCOVER MORE

THE CHARLES
HOTEL

LOCATION

SUITES

ROCCO FORTE HOTELS





CLASSIC SUITE
SUITES
THE CHARLES HOTEL, MUNICH



DISCOVER MORE

THE CHARLES
HOTEL

LOCATION

SUITES

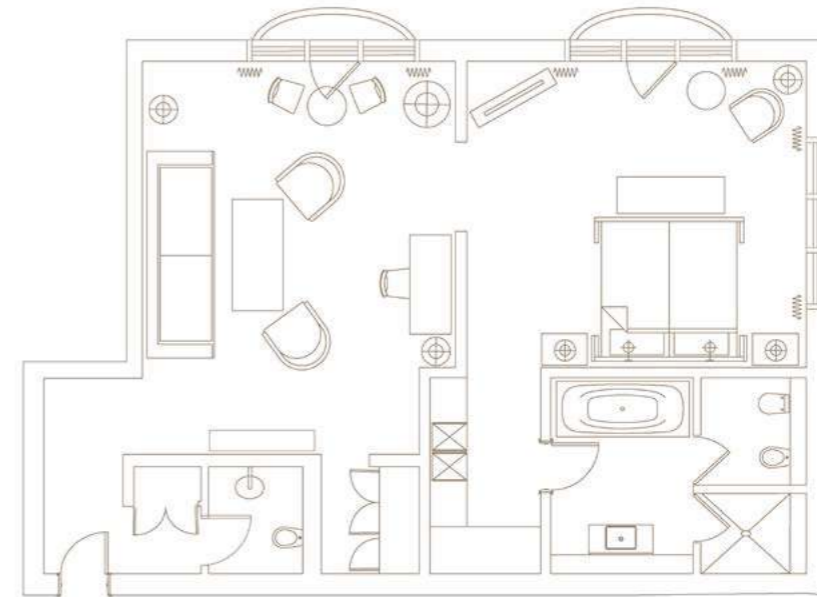
ROCCO FORTE HOTELS





CLASSIC SUITE

- 67 – 147m²
- Bedroom suite with 2 French balconies, a kitchenette and guest powder room
- Overlooking Munich's historic buildings
- Perfect for families – can be interconnected to create a two-bedroom or three-bedroom suite

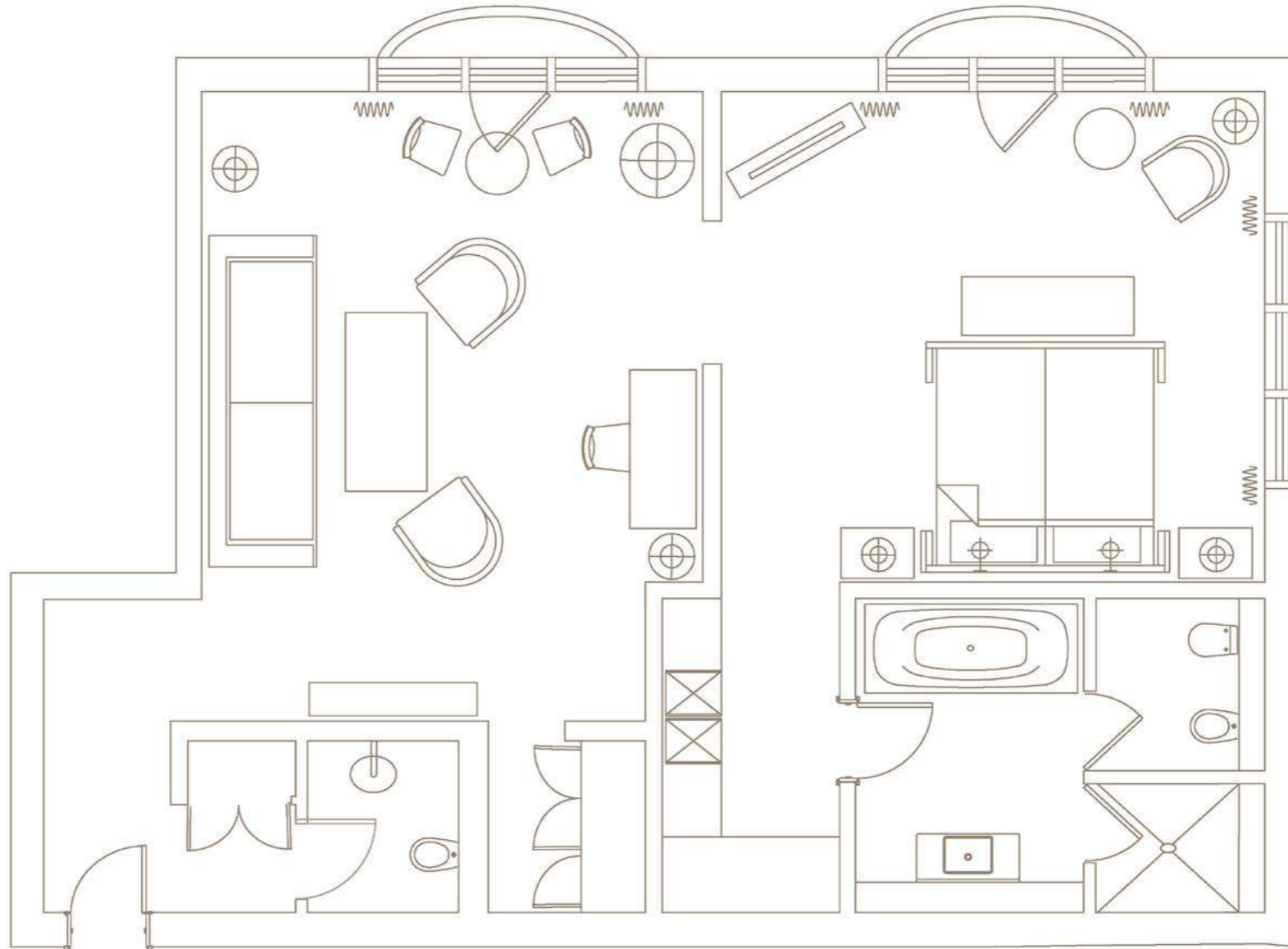


THE CHARLES HOTEL, MUNICH

GALLERY

BOOK NOW

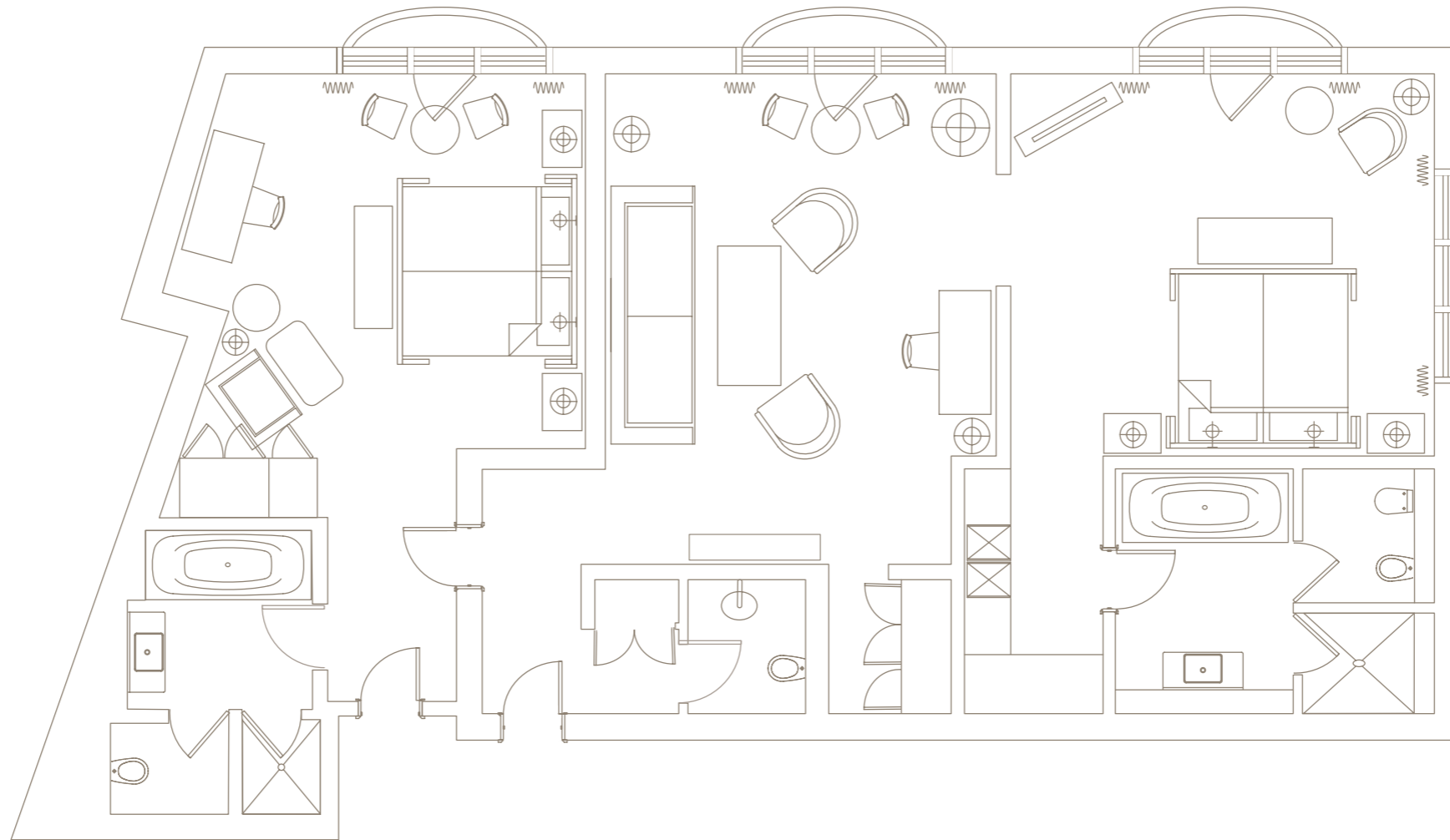
CLASSIC SUITE



[View two-bedroom suite](#)

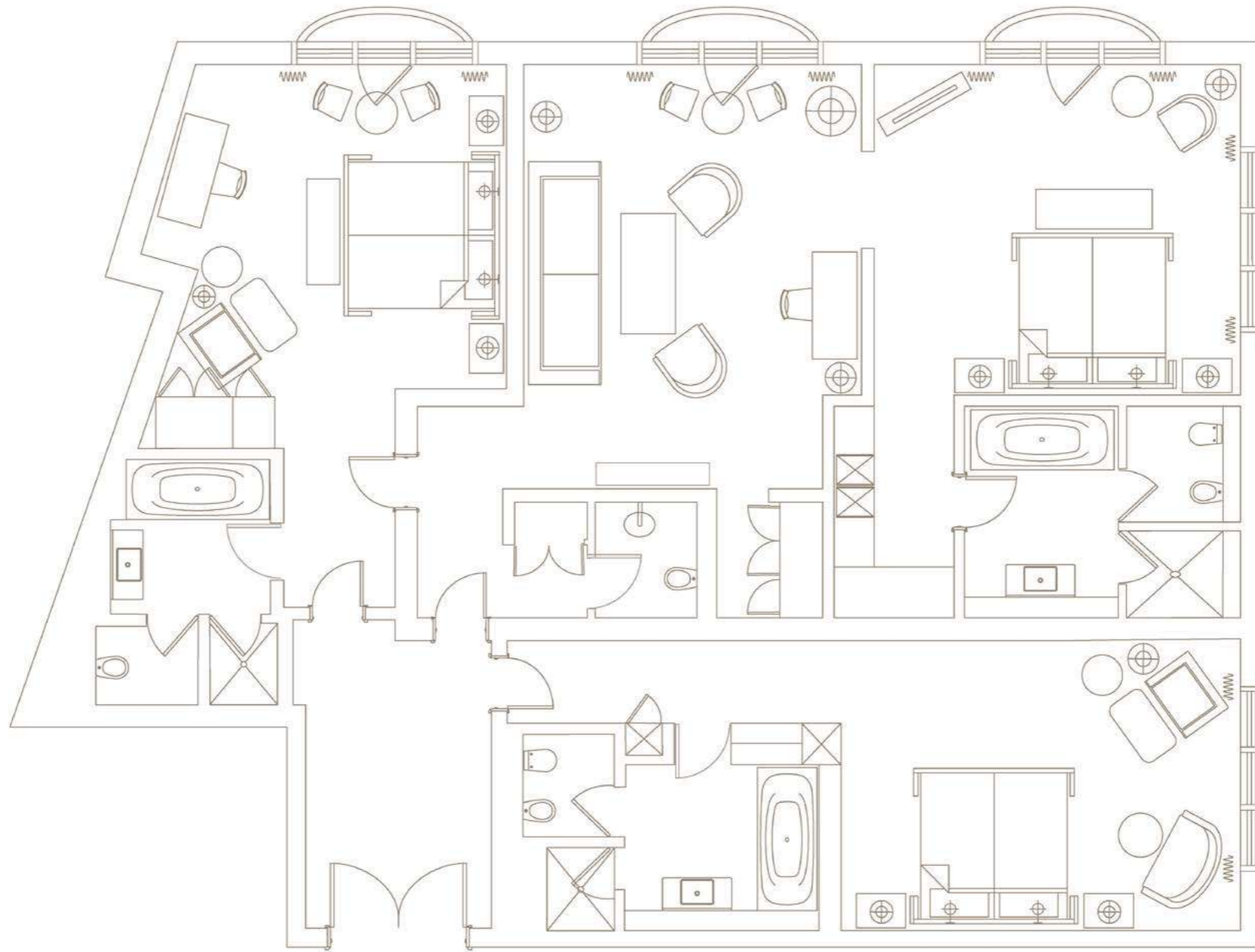
[View three-bedroom suite](#)

TWO-BEDROOM CLASSIC SUITE



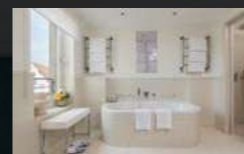
[View three-bedroom suite](#)

THREE-BEDROOM CLASSIC SUITE





SIGNATURE PARK
VIEW SUITE
SUITES
THE CHARLES HOTEL, MUNICH



DISCOVER MORE

THE CHARLES
HOTEL

LOCATION

SUITES

ROCCO FORTE HOTELS





SIGNATURE PARK
VIEW SUITE
SUITES
THE CHARLES HOTEL, MUNICH



DISCOVER MORE

THE CHARLES
HOTEL

LOCATION

SUITES

ROCCO FORTE HOTELS





SIGNATURE PARK
VIEW SUITE
SUITES
THE CHARLES HOTEL, MUNICH



DISCOVER MORE

THE CHARLES
HOTEL

LOCATION

SUITES

ROCCO FORTE HOTELS





SIGNATURE PARK VIEW
TWO-BEDROOM SUITE
SUITES
THE CHARLES HOTEL, MUNICH



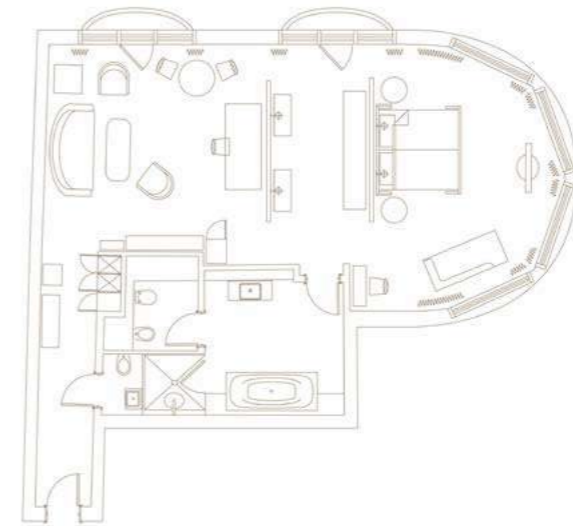
DISCOVER MORE





SIGNATURE PARK VIEW SUITE

- 73 – 113m²
- Open-plan corner suite with 2 French balconies
- Overlooking the Old Botanical Garden
- Bathroom with natural daylight, heated floors, bathtub and separate shower
- Perfect for families – can be interconnected to create a [Signature Park View Two-Bedroom Suite](#)



THE CHARLES HOTEL, MUNICH

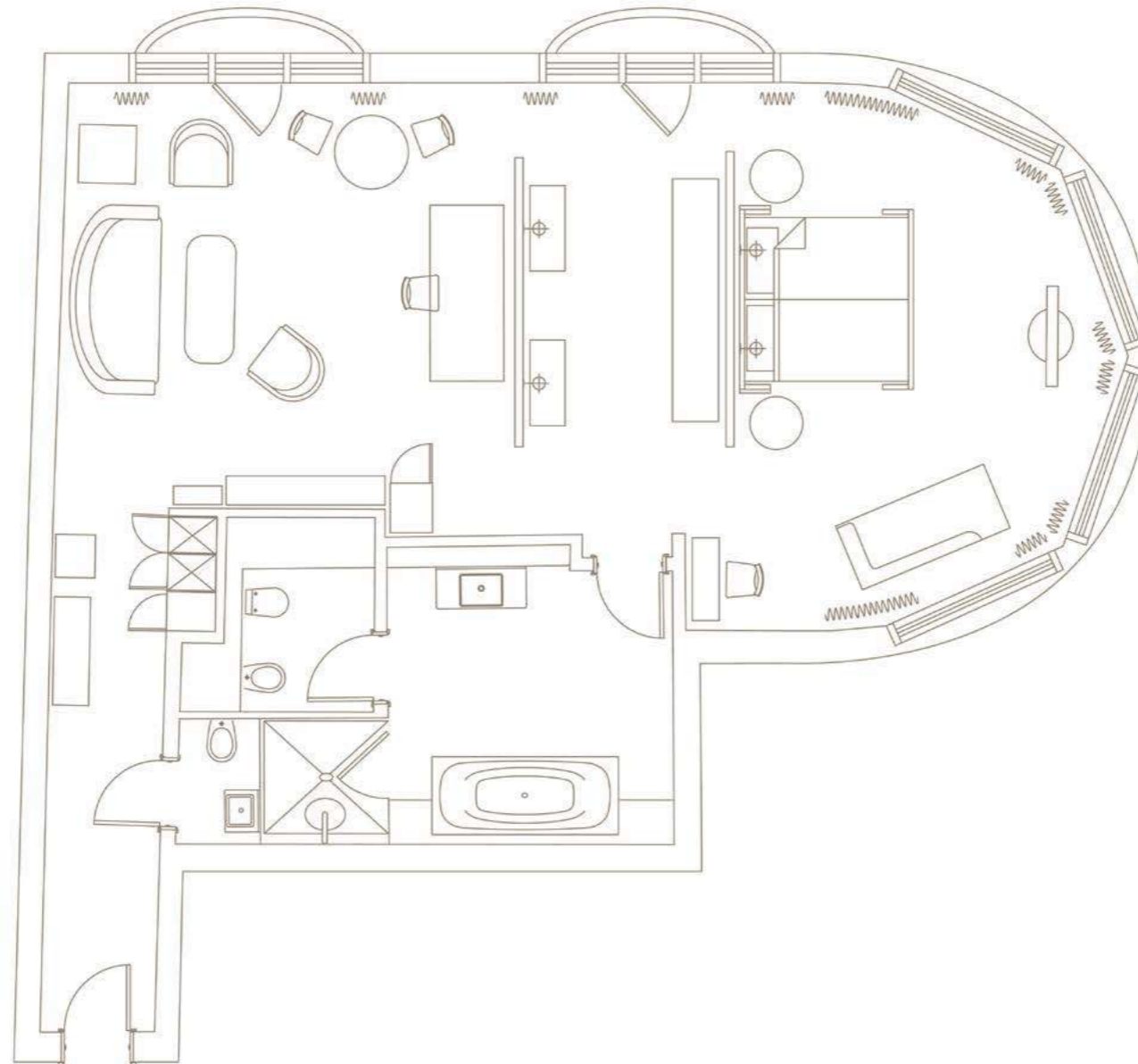
GALLERY

BOOK NOW





SIGNATURE PARK VIEW SUITE

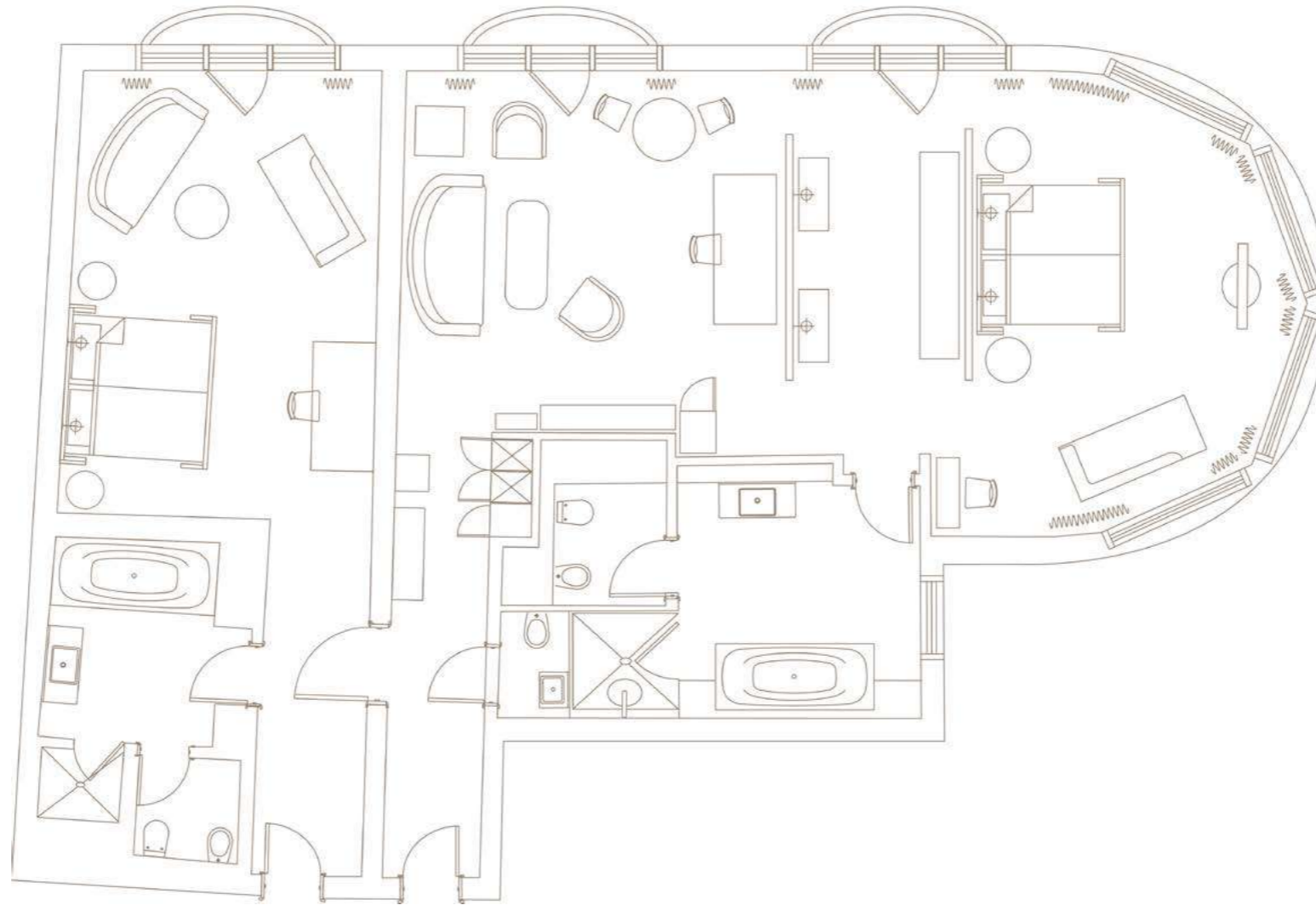


[View two-bedroom suite](#)





SIGNATURE PARK VIEW TWO-BEDROOM SUITE





SIGNATURE PANORAMIC
VIEW SUITE
SUITES
THE CHARLES HOTEL, MUNICH



DISCOVER MORE

THE CHARLES
HOTEL

LOCATION

SUITES

ROCCO FORTE HOTELS





SIGNATURE PANORAMIC
VIEW SUITE
SUITES
THE CHARLES HOTEL, MUNICH



DISCOVER MORE

THE CHARLES
HOTEL

LOCATION

SUITES

ROCCO FORTE HOTELS





SIGNATURE PANORAMIC
VIEW SUITE
SUITES
THE CHARLES HOTEL, MUNICH



DISCOVER MORE

THE CHARLES
HOTEL

LOCATION

SUITES

ROCCO FORTE HOTELS





SIGNATURE PANORAMIC
VIEW SUITE
SUITES
THE CHARLES HOTEL, MUNICH



DISCOVER MORE

THE CHARLES
HOTEL

LOCATION

SUITES

ROCCO FORTE HOTELS





SIGNATURE PANORAMIC
VIEW TWO-BEDROOM SUITE
SUITES
THE CHARLES HOTEL, MUNICH



DISCOVER MORE

THE CHARLES
HOTEL

LOCATION

SUITES

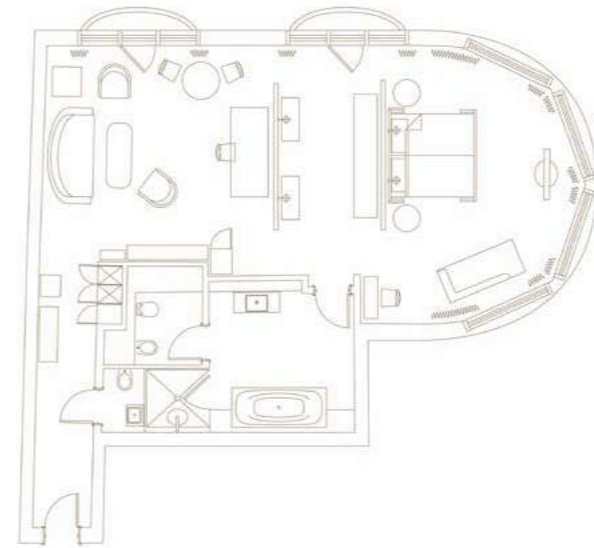
ROCCO FORTE HOTELS





SIGNATURE PANORAMIC VIEW SUITE

- 73 – 113m²
- Open-plan corner suite with 2 French balconies
- View of the Old Botanical Garden and Munich's skyline
- Bathroom with natural daylight, heated floors, bathtub and separate shower
- Perfect for families – can be interconnected to create a Signature Panoramic View Two-Bedroom Suite



THE CHARLES HOTEL, MUNICH

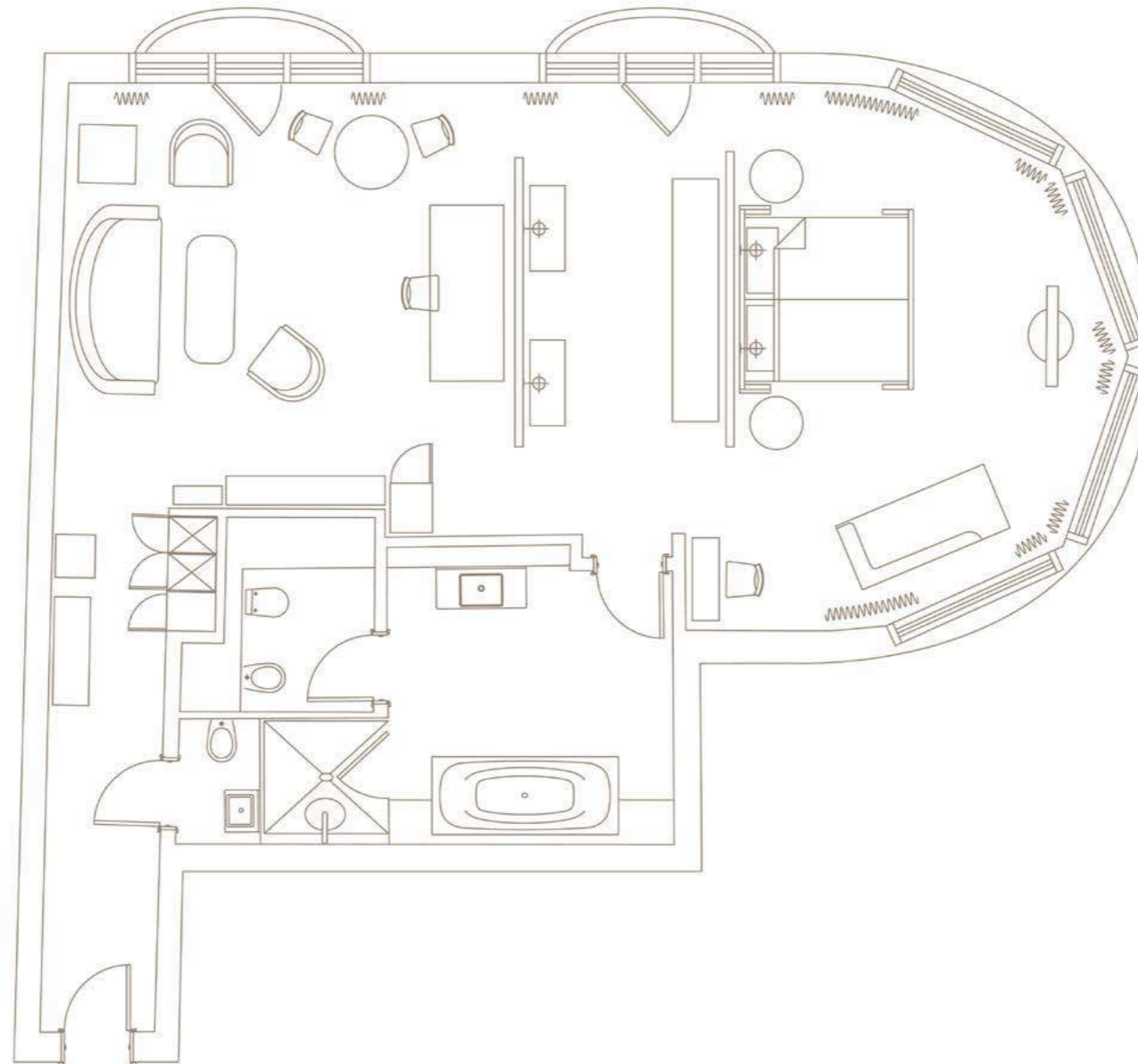
GALLERY

BOOK NOW





SIGNATURE PANORAMIC VIEW SUITE



[View two-bedroom suite](#)





SIGNATURE PANORAMIC VIEW TWO-BEDROOM SUITE

