




HOTEL AMIGO
BRUSSELS

Rue de l'Amigo 1-3, Brussels, 1000, Belgium t: +32 2 547 4747 





Hotel Amigo is centrally located, just around the corner from the magnificent Grand-Place. Set among historic cobbled streets in the heart of Brussels, it's a place where history is mixed with contemporary charm.

TRANSFERS

DINING AND SPA



TRANSFERS

- 20-minute drive from Brussels Airport (BRU)
- 10-minute drive from Brussels Midi train station

Hotel Amigo is centrally located, just around the corner from the magnificent Grand-Place. Set among historic cobbled streets in the heart of Brussels, it's a place where history is mixed with contemporary charm.

TRANSFERS

DINING AND SPA



RESTAURANT AND BAR

- **Bocconi** – restaurant and terrace
- **Bar Magritte**

RELAXATION

- 24h gym
- In-room beauty and massage treatments by appointment

Hotel Amigo is centrally located, just around the corner from the magnificent Grand-Place. Set among historic cobbled streets in the heart of Brussels, it's a place where history is mixed with contemporary charm.

TRANSFERS

DINING AND SPA



SUITES



FORTE SUITES





EVERY SUITE TELLS A STORY. YOURS.

Individual by design. Extraordinary by experience. Go beyond the suite into hospitality that feels like a homecoming and let your curiosity lead you into the heartbeat of local life.

Inside, everything unfolds naturally, as you find yourself between lazy mornings and stolen afternoons. Every fine detail holds personal meaning, from your favourite scent to a bed made up beneath a blanket of stars. Whether you're here for a romantic escape or returning with family year after year, your suite is part of your story. One that is impossible to replicate.





SUITES & BEYOND

Character in every corner and discoveries in every stay through personal touches, all thoughtfully arranged, when you book direct:

SUITES

- In-suite check-in with welcome amenities
- Complimentary in-room bar inclusive of alcoholic beverages
- Wardrobe concierge service (packing/unpacking, pressing of two garments, shoe shining, sewing services, access to personalised shopping experiences)
- Personalised amenity programme
- Access to bespoke services team pre/during stay
- Personalised experiences and cultural encounters
- One way transfer from the airport
- Breakfast in your suite or in our restaurant
- Family programme benefits

FORTE SUITES

- In-suite check-in with welcome amenities
- Complimentary in-room bar inclusive of alcoholic beverages
- Wardrobe concierge service (packing/unpacking, pressing of garments, shoe shining, sewing services, access to personalised shopping experiences)
- Personalised amenity programme
- Access to bespoke services team pre/during stay
- Personalised experiences and cultural encounters
- Return transfer to/from airport
- Breakfast in your suite or in our restaurant
- Family programme benefits





BLATON SUITE
FORTE SUITE



DISCOVER MORE

HOTEL AMIGO

LOCATION

SUITES

ROCCO FORTE HOTELS





BLATON SUITE
FORTE SUITE



DISCOVER MORE

HOTEL AMIGO LOCATION

SUITES

ROCCO FORTE HOTELS





BLATON SUITE
FORTE SUITE



DISCOVER MORE

HOTEL AMIGO

LOCATION

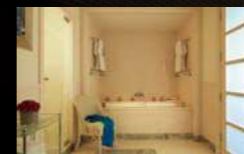
SUITES

ROCCO FORTE HOTELS





BLATON SUITE
FORTE SUITE



DISCOVER MORE

HOTEL AMIGO

LOCATION

SUITES

ROCCO FORTE HOTELS





BLATON SUITE
FORTE SUITE



DISCOVER MORE

HOTEL AMIGO

LOCATION

SUITES

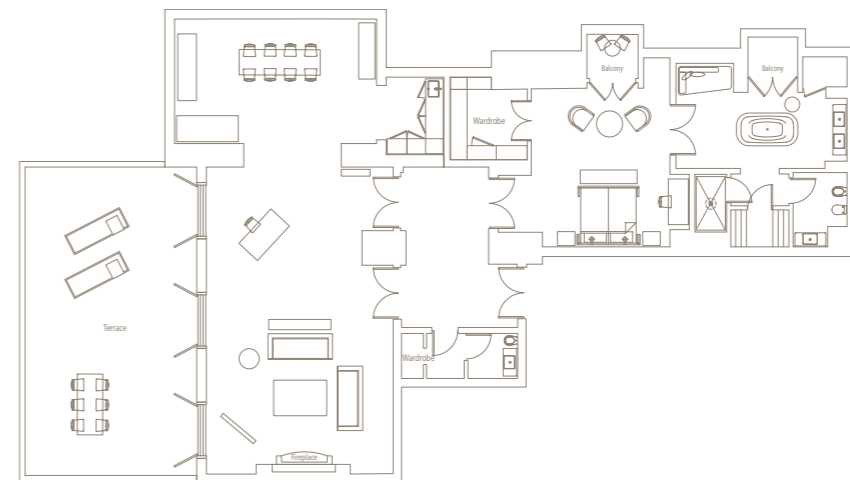
ROCCO FORTE HOTELS





BLATON SUITE

- 180m² + 60m² terrace
- Town hall and City view
- Entrance hall, dining room, kitchen, sitting room with fireplace
- Bedroom with a king-sized bed, two Juliette balconies and walk-in wardrobe
- Marble bathroom with bathtub, walk-in shower and guest powder room
- Can accommodate an extra bed and be interconnected to form a two-bedroom suite

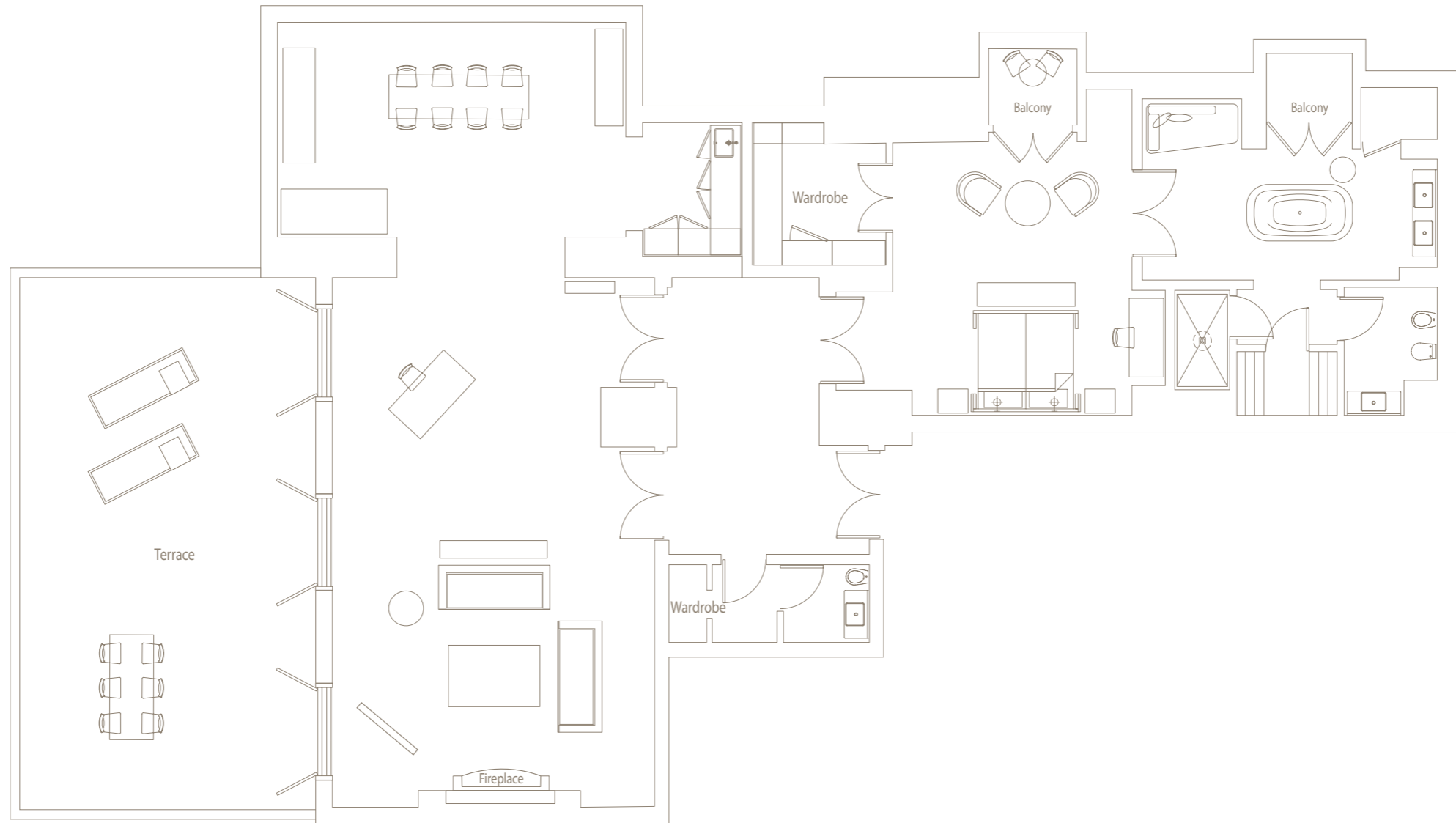


GALLERY

BOOK NOW



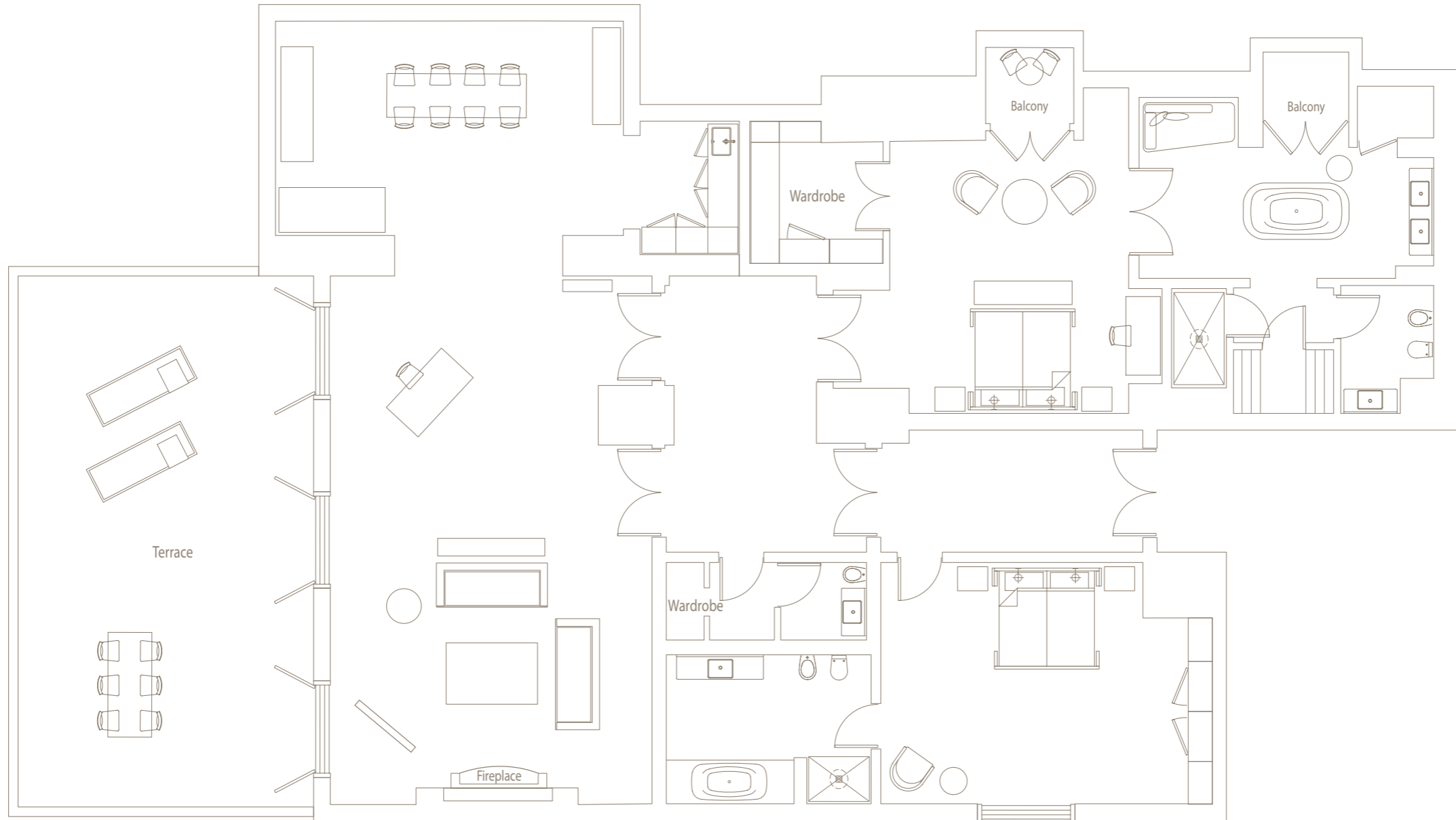
BLATON SUITE



[View two-bedroom suite](#)



TWO-BEDROOM BLATON SUITE





PRESIDENTIAL SUITE
FORTE SUITE



DISCOVER MORE

HOTEL AMIGO LOCATION

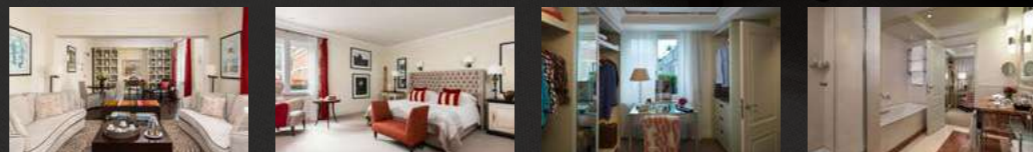
SUITES

ROCCO FORTE HOTELS





PRESIDENTIAL SUITE
FORTE SUITE



DISCOVER MORE

HOTEL AMIGO LOCATION

SUITES

ROCCO FORTE HOTELS





PRESIDENTIAL SUITE
FORTE SUITE



DISCOVER MORE

HOTEL AMIGO LOCATION

SUITES

ROCCO FORTE HOTELS





PRESIDENTIAL SUITE
FORTE SUITE



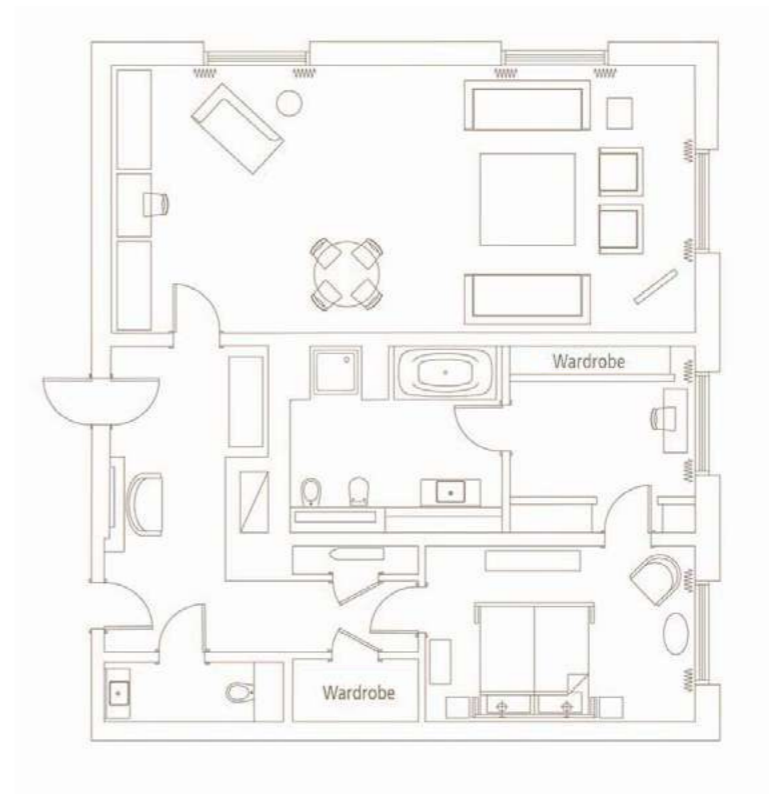
DISCOVER MORE





PRESIDENTIAL SUITE

- 110m²
- Town Hall view
- Bedroom with king-sized bed and walk-in wardrobe
- Marble bathroom with bathtub and walk-in shower
- Can be interconnected to form a two-bedroom suite

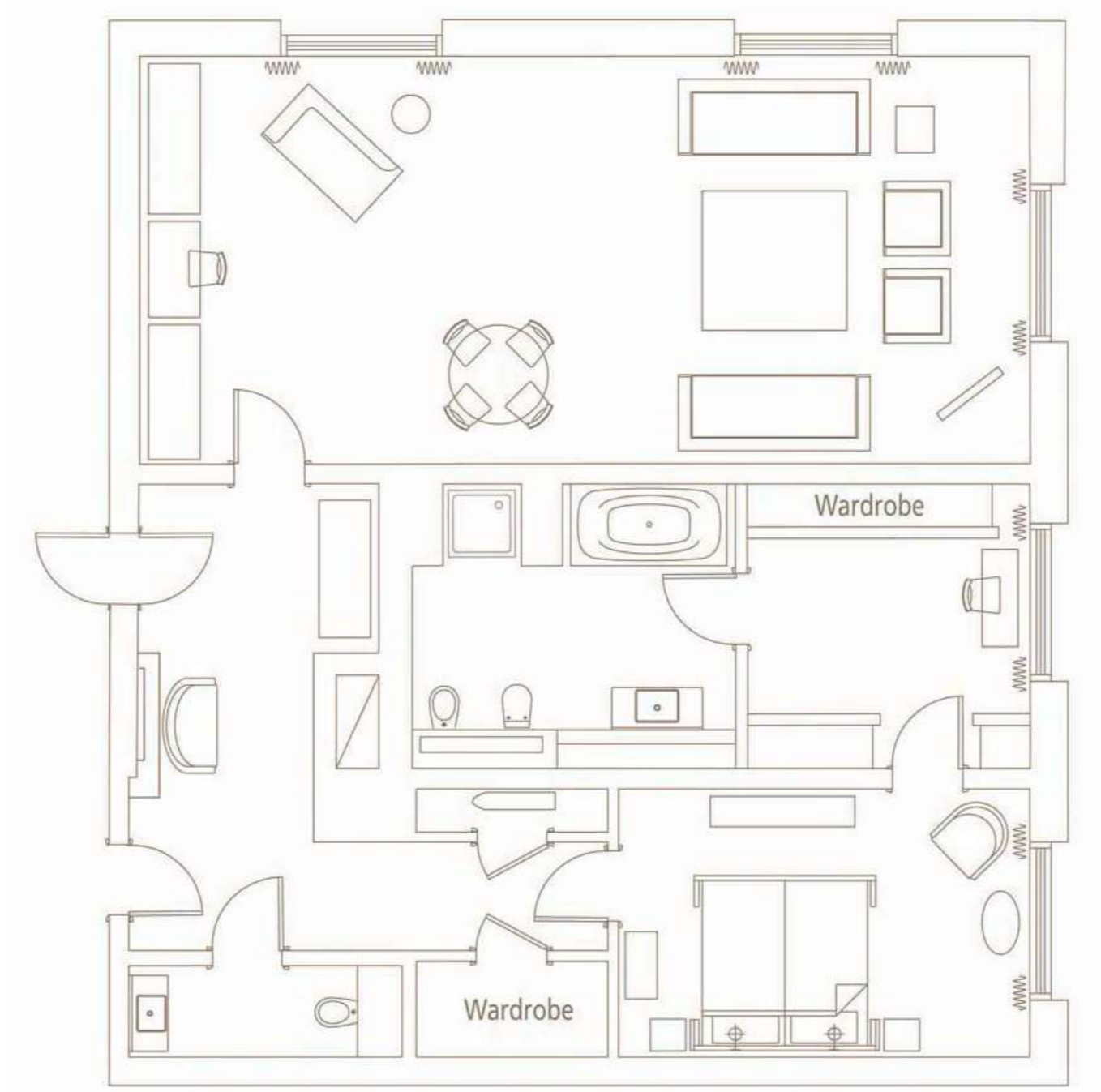


GALLERY

BOOK NOW



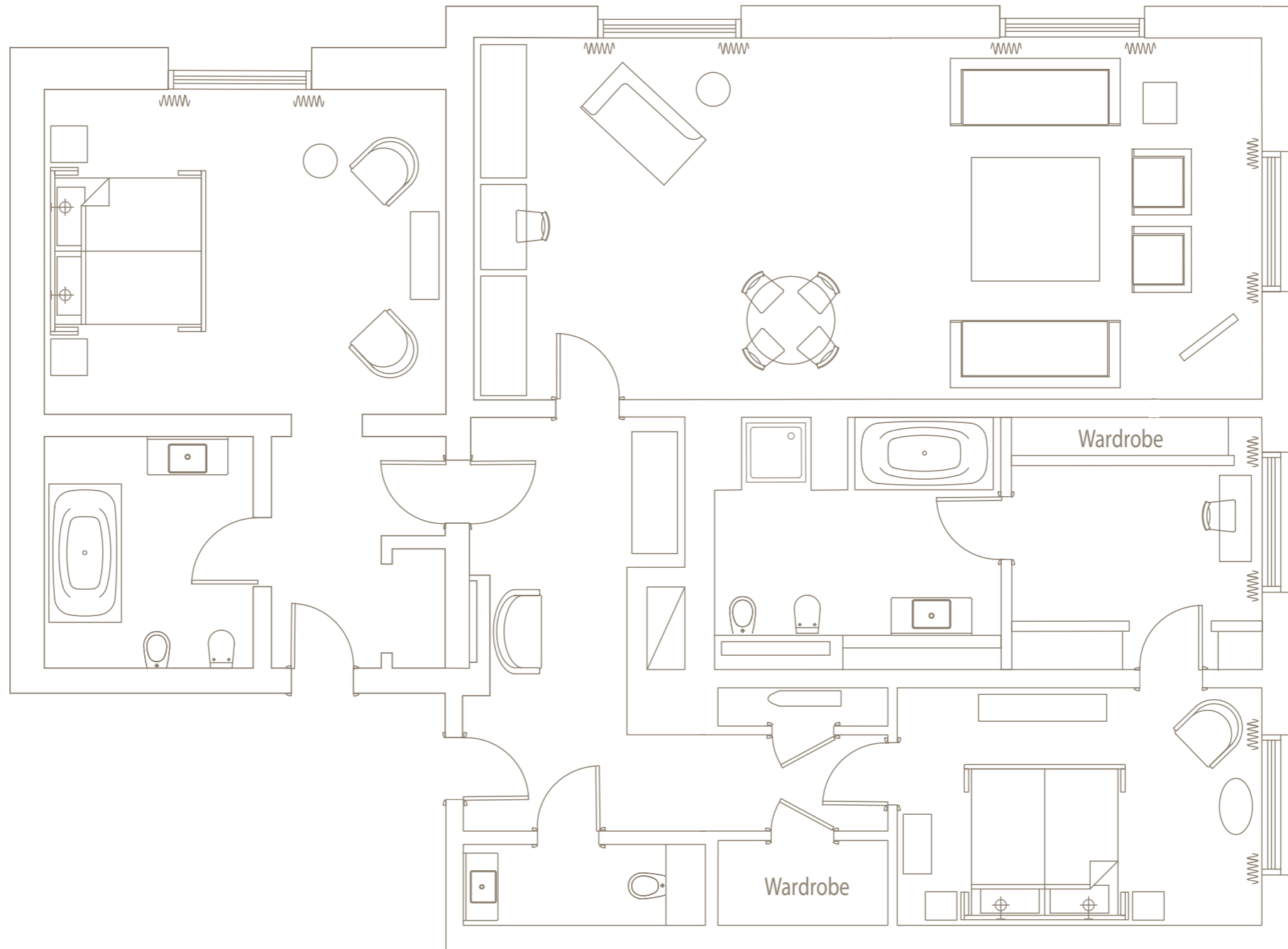
PRESIDENTIAL SUITE



[View two-bedroom suite](#)



TWO-BEDROOM PRESIDENTIAL SUITE





TINTIN SUITE
FORTE SUITE



DISCOVER MORE





TINTIN SUITE
FORTE SUITE



DISCOVER MORE



TINTIN SUITE
FORTE SUITE



DISCOVER MORE

HOTEL AMIGO LOCATION

SUITES

ROCCO FORTE HOTELS





TINTIN SUITE
FORTE SUITE



DISCOVER MORE





TWO-BEDROOM
TINTIN SUITE
FORTE SUITE



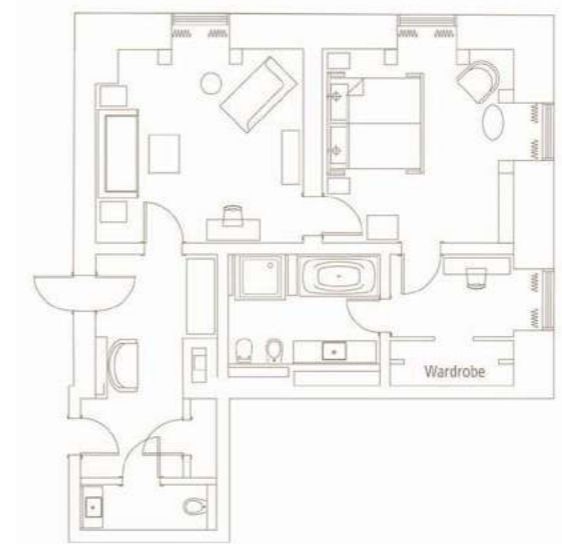
DISCOVER MORE





TINTIN SUITE

- 80m²
- Town Hall view
- Handmade decorations from Tintinimagination, and a drawing signed by Steven Spielberg from the Tintin film launch
- Bedroom with king-sized bed
- Marble bathroom with bathtub and walk-in shower
- Perfect for families – can be interconnected to create a two-bedroom suite

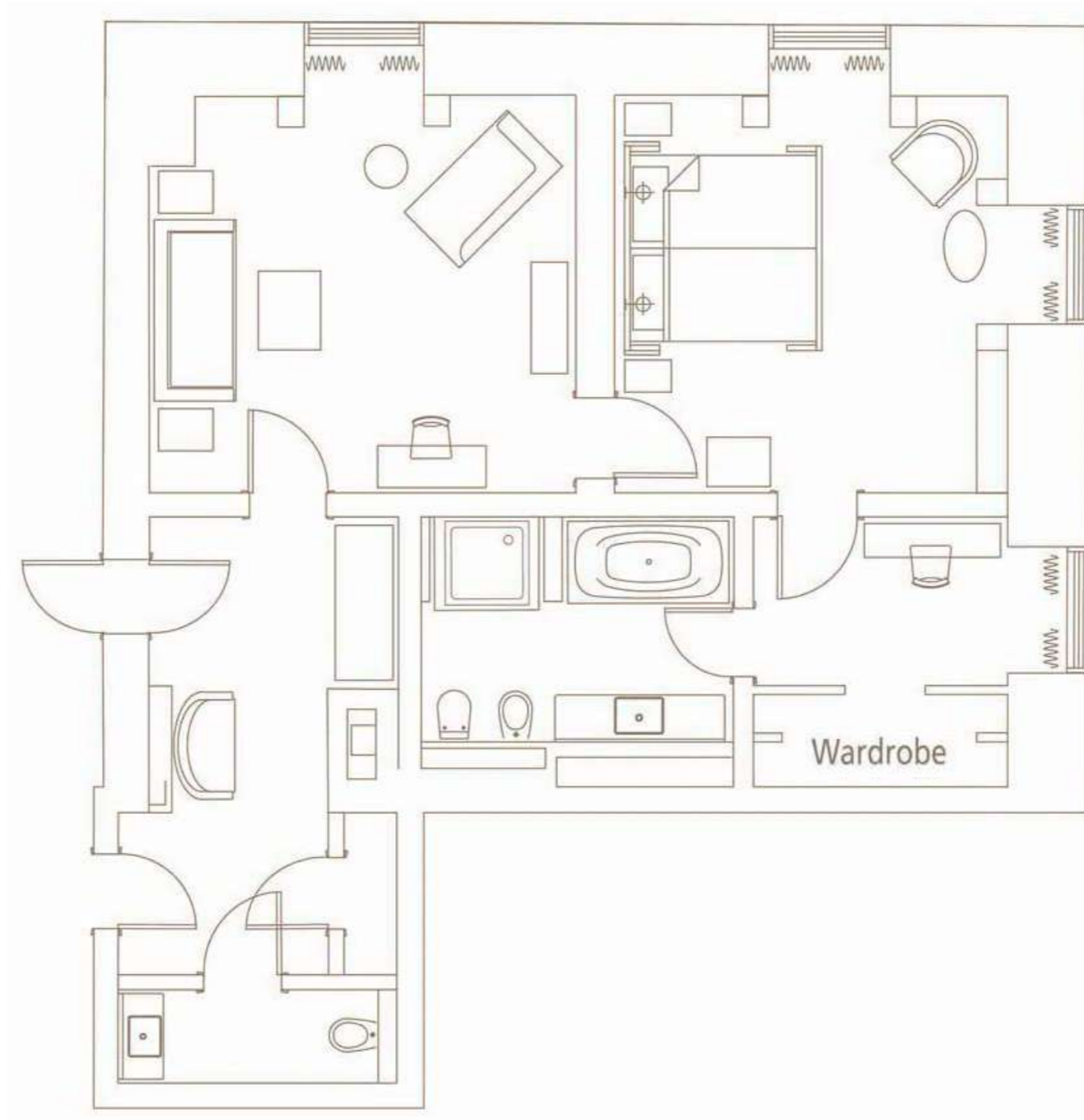


GALLERY

BOOK NOW



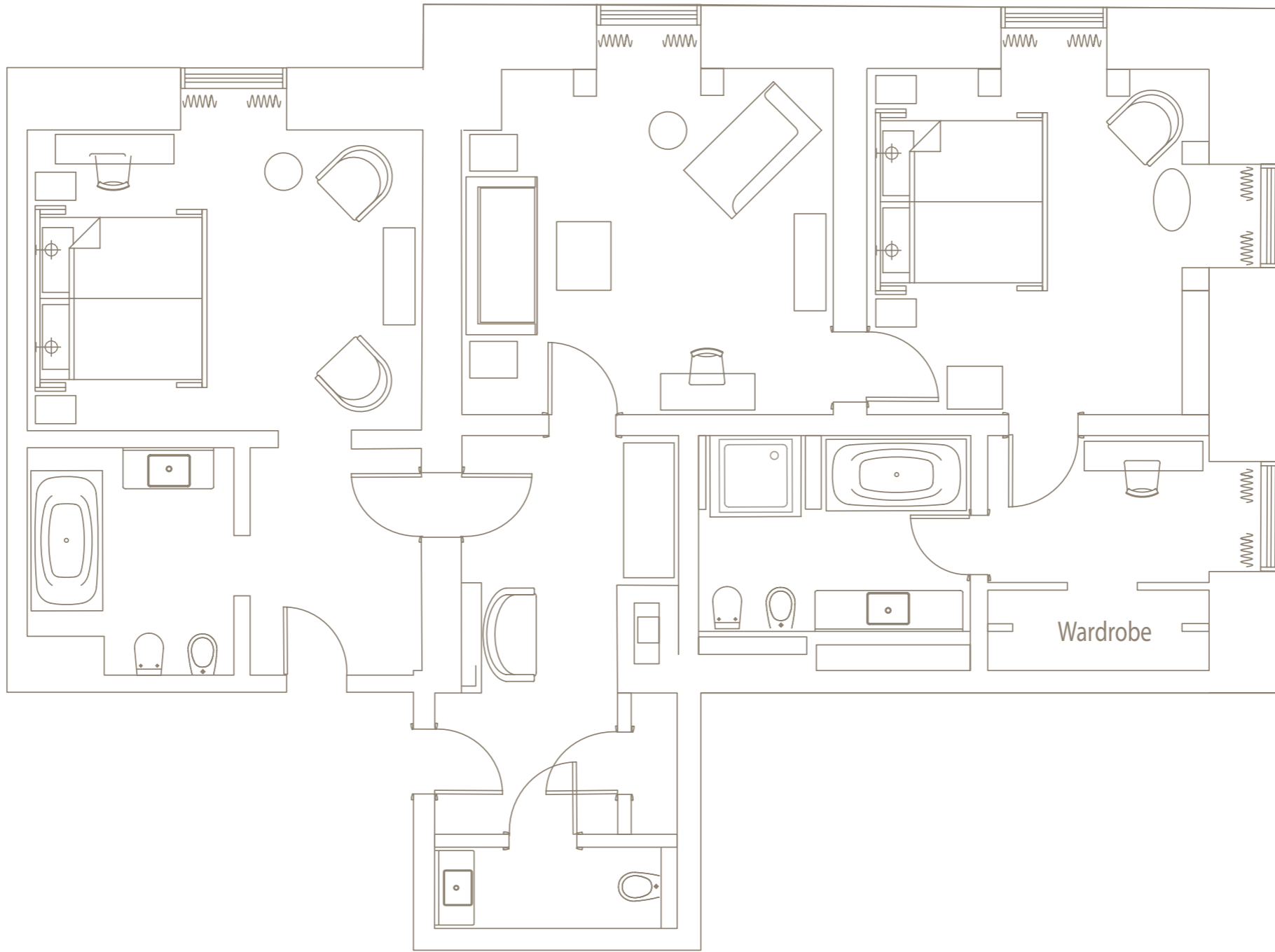
TINTIN SUITE



[View two-bedroom suite](#)



TWO-BEDROOM TINTIN SUITE





DIANE VON
FÜRSTENBERG SUITE
FORTE SUITE



DISCOVER MORE

HOTEL AMIGO LOCATION

SUITES

ROCCO FORTE HOTELS





DIANE VON
FÜRSTENBERG SUITE
FORTE SUITE



DISCOVER MORE





DIANE VON
FÜRSTENBERG SUITE
FORTE SUITE



DISCOVER MORE





DIANE VON
FÜRSTENBERG SUITE
FORTE SUITE



DISCOVER MORE



I love Belgium
love
Diane ♥



DIANE VON
FÜRSTENBERG SUITE
FORTE SUITE



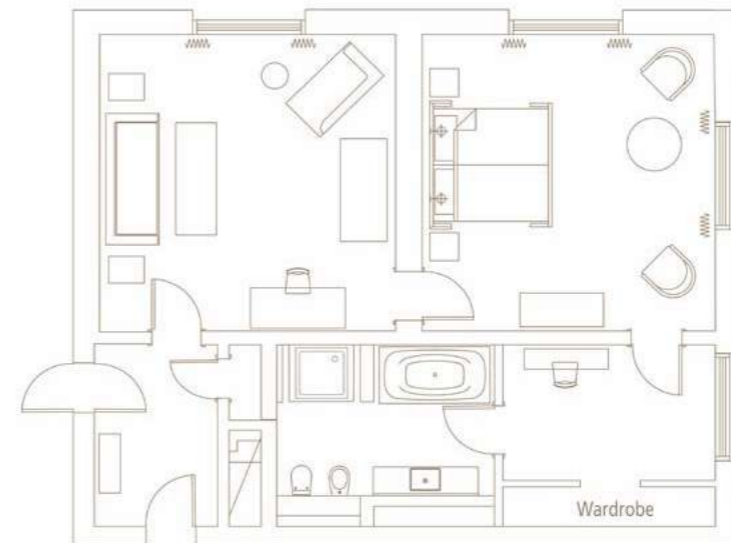
DISCOVER MORE



DIANE VON FÜRSTENBERG SUITE



- 80m²
- Town Hall view
- Created in honour of the 50th anniversary of the wrap dress, the suite's furnishings are personally selected by Diane von Fürstenberg
- Bedroom with a king-sized bed
- Marble bathroom with bathtub and walk-in shower
- Can be interconnected to form a two-bedroom suite

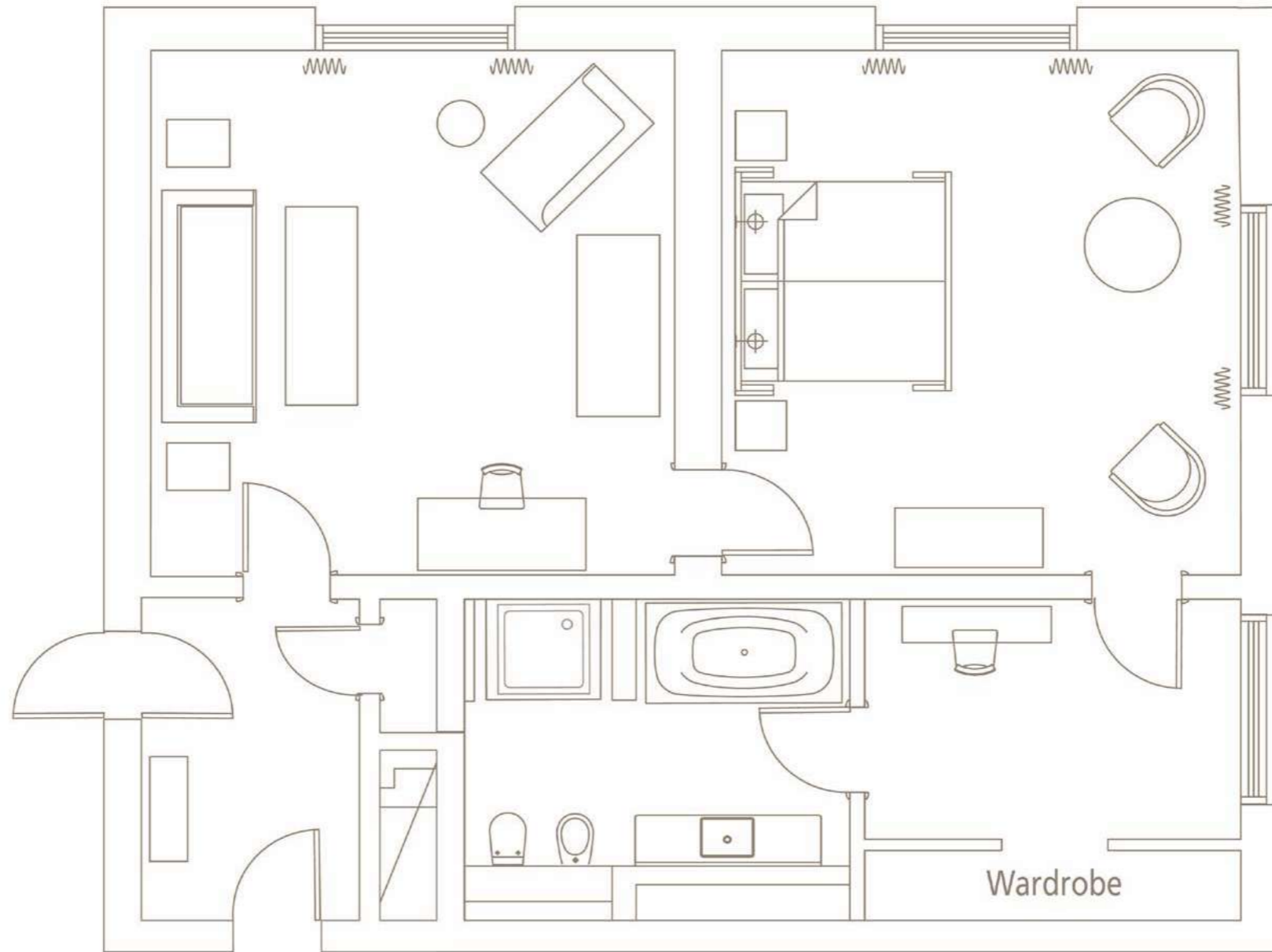


GALLERY

BOOK NOW



DIANE VON FÜRSTENBERG SUITE

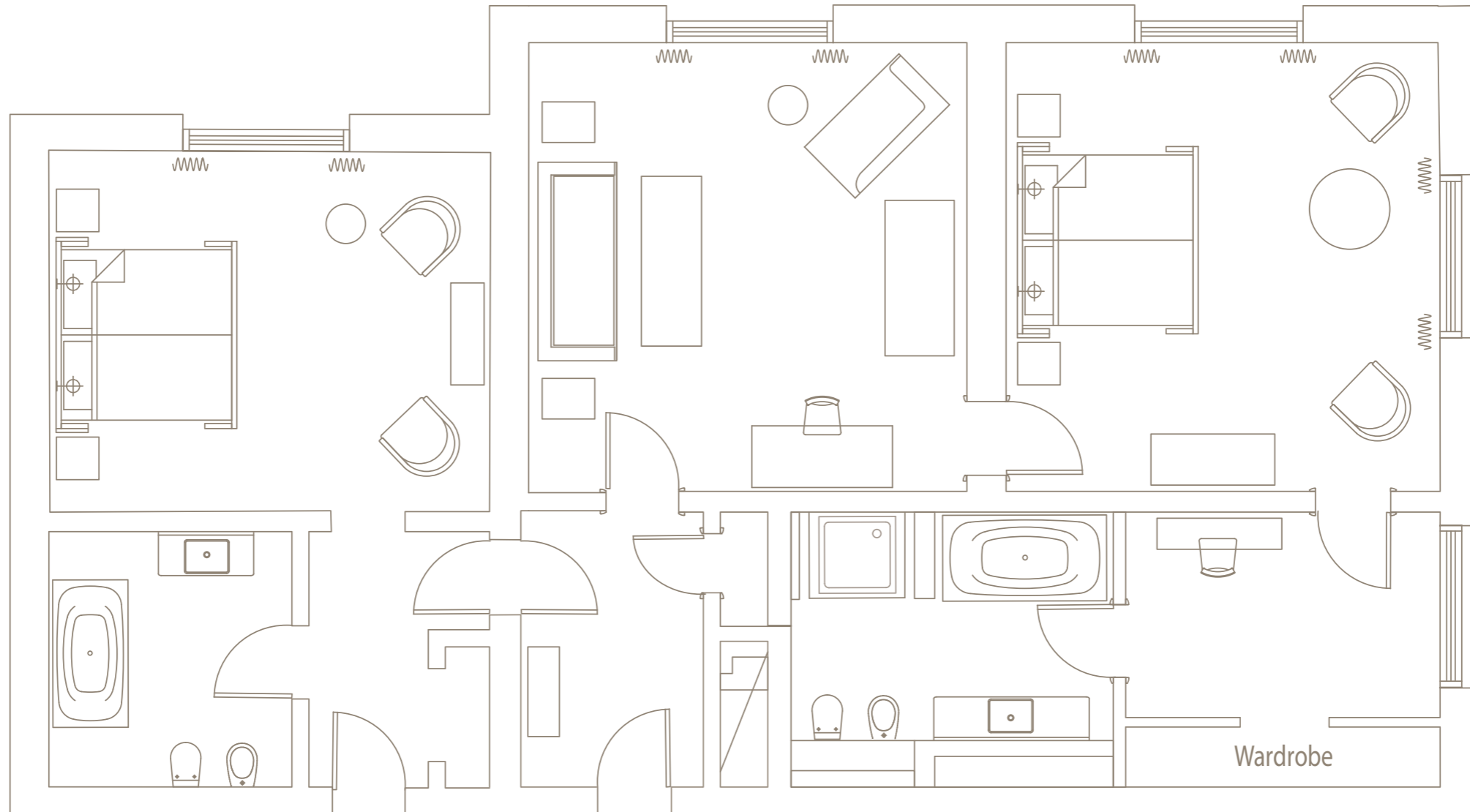


View two-bedroom suite





TWO-BEDROOM DIANE VON FÜRSTENBERG SUITE





PRESTIGE SUITE
SUITE



DISCOVER MORE





PRESTIGE SUITE
SUITE



DISCOVER MORE

HOTEL AMIGO LOCATION

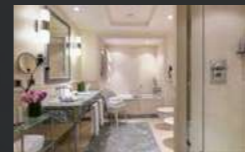
SUITES

ROCCO FORTE HOTELS





PRESTIGE SUITE
SUITE



DISCOVER MORE



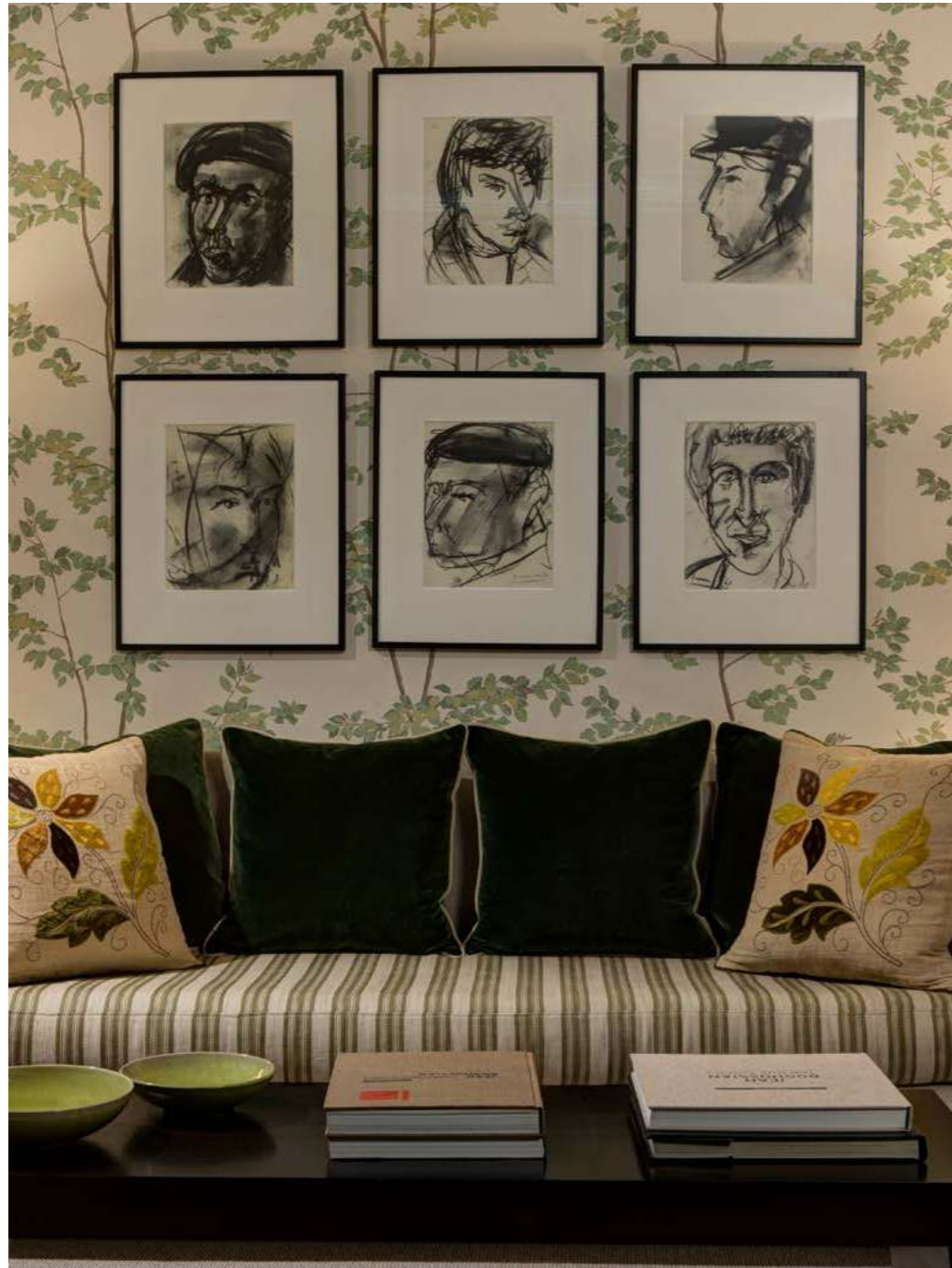


PRESTIGE SUITE
SUITE



DISCOVER MORE





PRESTIGE SUITE

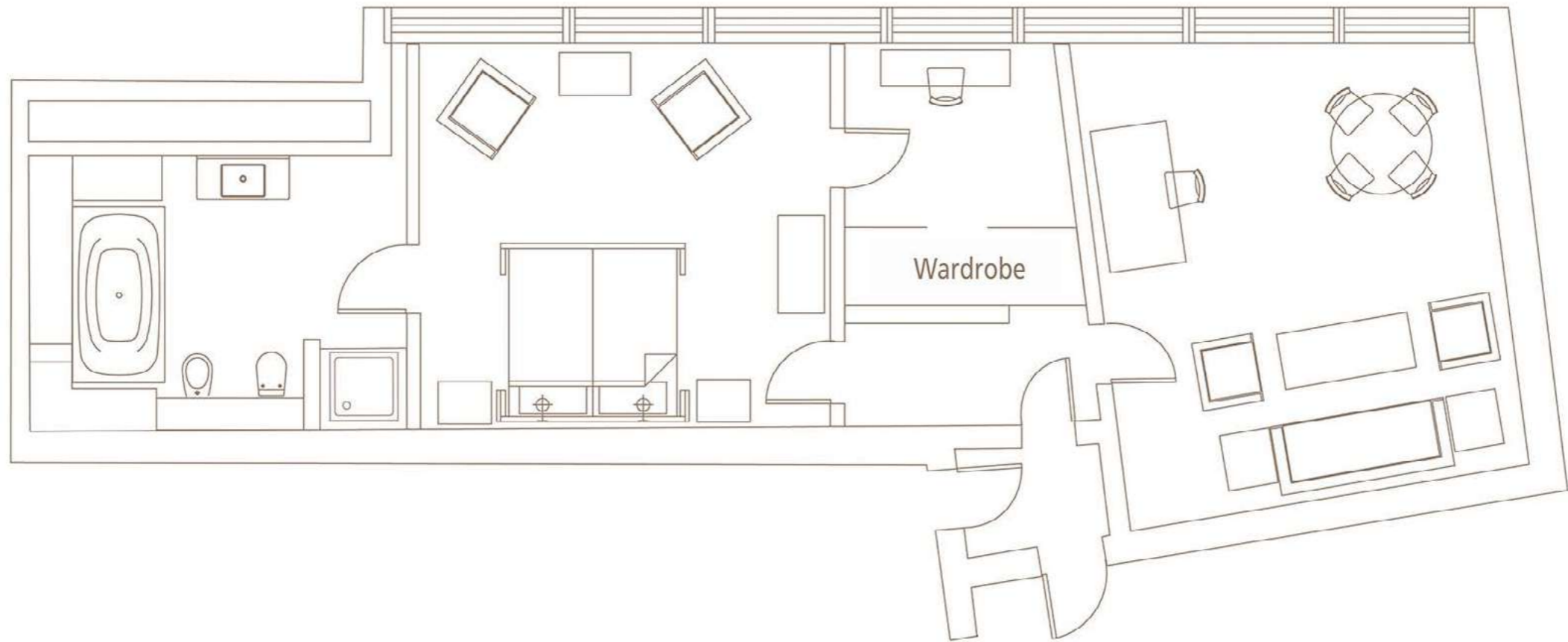
- 75m²
- Town Hall and Grand-Place view
- Bedroom with king-sized bed and walk in wardrobe
- Perfect for families - can accommodate an extra bed and be interconnected to form a two-bedroom suite



GALLERY

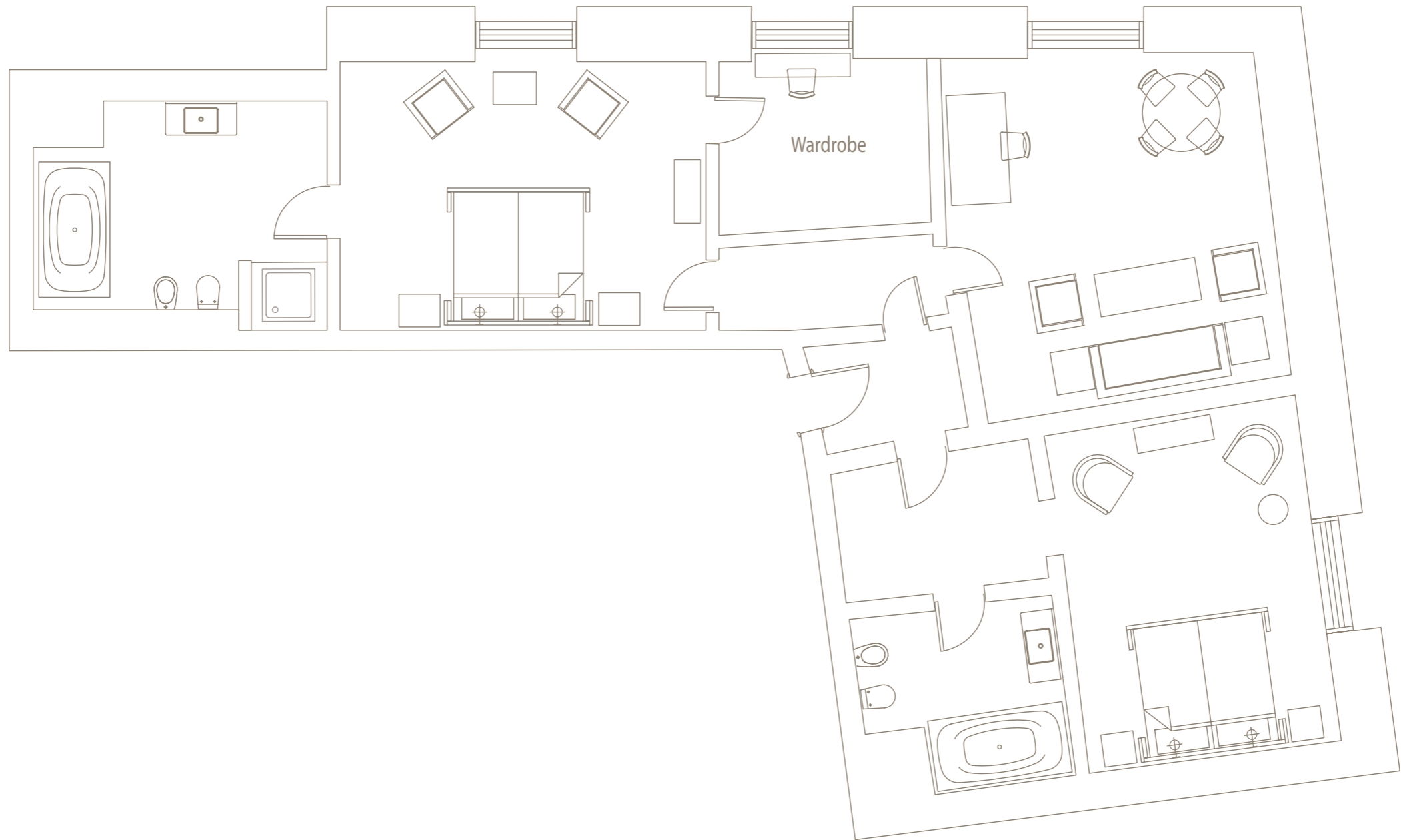
BOOK NOW

PRESTIGE SUITE



[View two-bedroom suite](#)

TWO-BEDROOM PRESTIGE SUITE





CLASSIC SUITE
SUITE



DISCOVER MORE

HOTEL AMIGO LOCATION

SUITES

ROCCO FORTE HOTELS





CLASSIC SUITE
SUITE

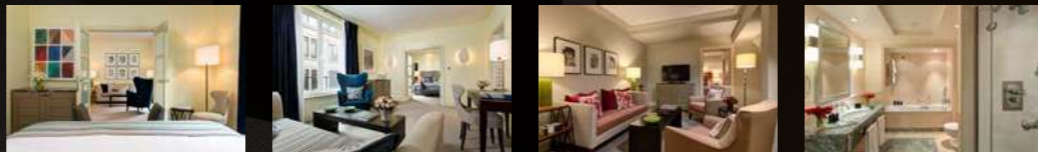


DISCOVER MORE





CLASSIC SUITE
SUITE

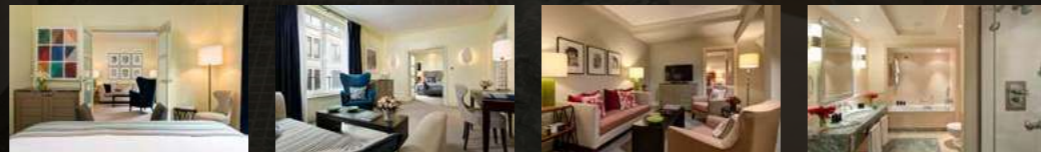


DISCOVER MORE



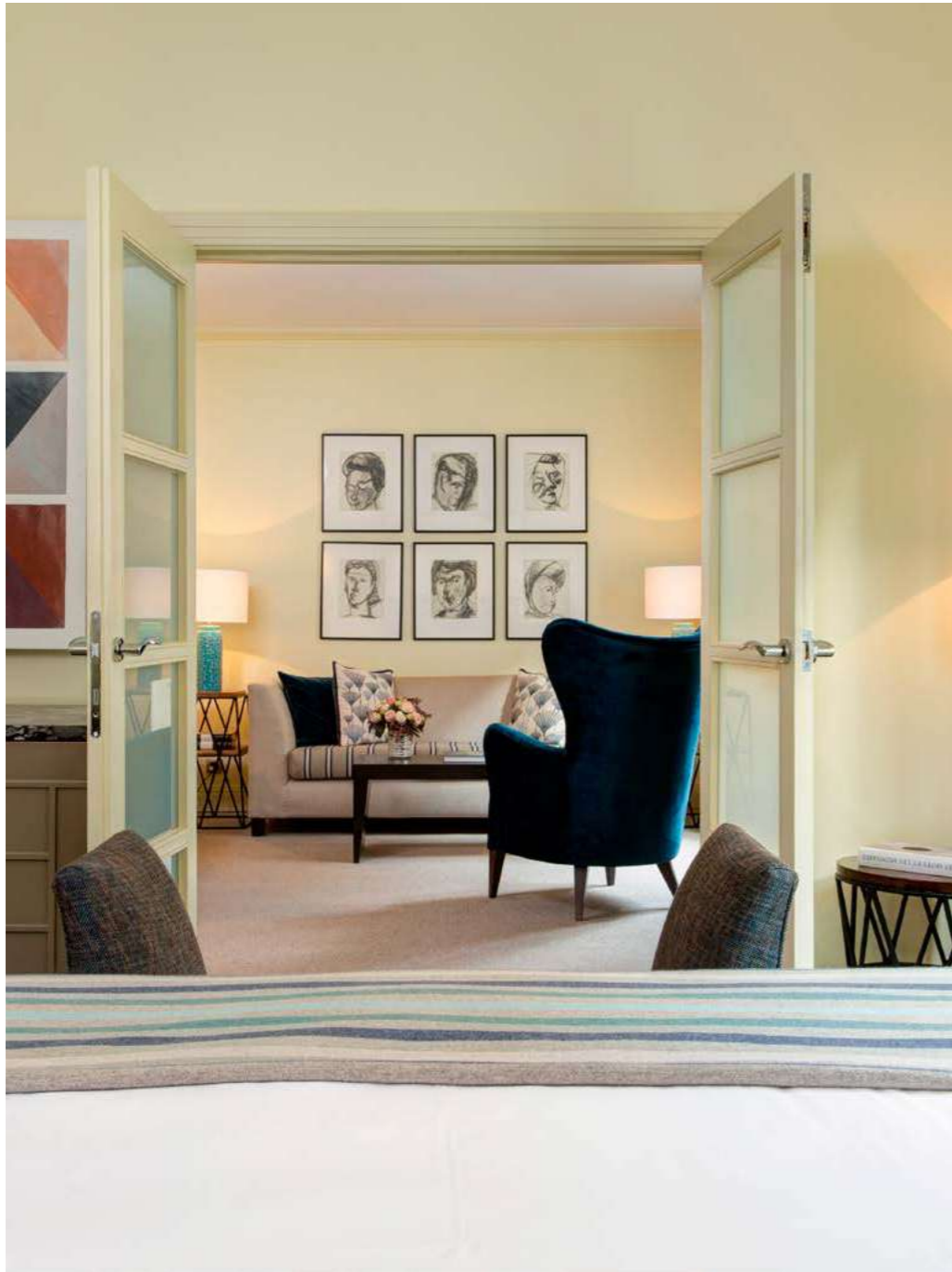


CLASSIC SUITE
SUITE



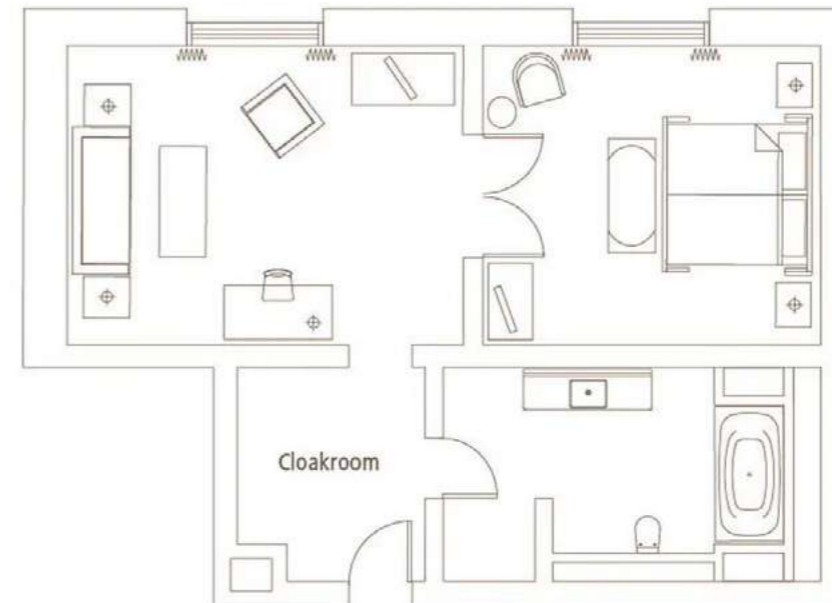
DISCOVER MORE





CLASSIC SUITE

- 70m²
- Bedroom with a king-sized bed
- Marble bathroom with bathtub and walk-in shower



GALLERY

BOOK NOW



CLASSIC SUITE

